

## CT455 Rabbit pAb

CatalogNo: YT7673

### Key Features

#### Host Species

- Rabbit

#### Reactivity

- Human, Mouse, Rat

#### Applications

- WB

#### MW

- 21kD (Calculated)

#### Isotype

- IgG

### Storage

**Storage\*** -15°C to -25°C/1 year (Do not lower than -25°C)

**Formulation** Liquid in PBS containing 50% glycerol, 0.5% BSA and 0.02% sodium azide.

### Recommended Dilution Ratios

WB 1:500-2000

### Basic Information

**Clonality** Polyclonal

### Immunogen Information

**Immunogen** Synthesized peptide derived from human CT455 AA range: 135-185

**Specificity** This antibody detects endogenous levels of CT455 at Human

### Target Information

**Gene name** CT45A5 CT45-5

**Protein Name** CT455

**Organism**

**Gene ID**

**UniProt ID**

Human

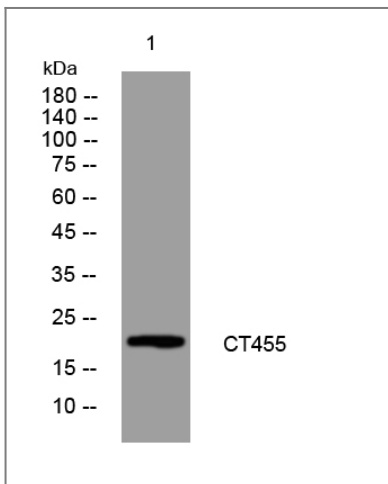
[441521](#);

[Q6NSH3](#);

**Function**

tissue specificity:Testis specific. Expressed in cancer cell lines.,

## Validation Data



Western blot analysis of lysates from AD293 cells, primary antibody was diluted at 1:1000, 4°over night

## Contact information

Orders: [order.cn@immunoway.com](mailto:order.cn@immunoway.com)  
Support: [support.cn@immunoway.com](mailto:support.cn@immunoway.com)  
Telephone: 400-8787-807(China)  
Website: <http://www.immunoway.com.cn>  
Address: 2200 Ringwood Ave San Jose, CA 95131 USA



Please scan the QR code to access additional product information:  
**CT455 Rabbit pAb**

For Research Use Only. Not for Use in Diagnostic Procedures.

[Antibody](#) | [ELISA Kits](#) | [Protein](#) | [Reagents](#)