

SIAT9 Rabbit pAb

CatalogNo: YT7652

Key Features

Host Species

- Rabbit

Reactivity

- Human, Mouse, Rat

Applications

- WB, ELISA, IHC

MW

- 46kD (Calculated)

Isotype

- IgG

Recommended Dilution Ratios

WB 1:500-2000

IHC 1:50-300

ELISA 1:2000-20000

Storage

Storage*

-15°C to -25°C/1 year (Do not lower than -25°C)

Formulation

Liquid in PBS containing 50% glycerol, 0.5% BSA and 0.02% sodium azide.

Basic Information

Clonality

Polyclonal

Immunogen Information

Immunogen

Synthesized peptide derived from human SIAT9 AA range: 157-207

Specificity

This antibody detects endogenous levels of SIAT9 at Human/Mouse/Rat

Target Information

Gene name

ST3GAL5 SIAT9 UNQ2510/PRO5998

Protein Name SIAT9

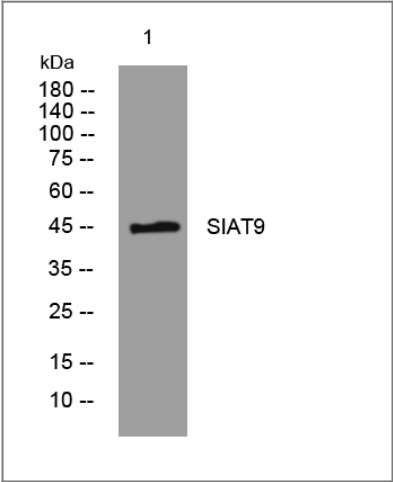
| Organism | Gene ID | UniProt ID |
|----------|------------------------|-------------------------|
| Human | 8869; | Q9UNP4; |
| Mouse | 20454; | O88829; |
| Rat | 83505; | Q68G12; |

Cellular Localization Golgi apparatus membrane ; Single-pass type II membrane protein .

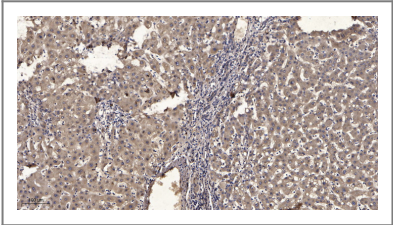
Tissue specificity Ubiquitous. High expression in brain, skeletal muscle, placenta, and testis. mRNA widely distributed in human brain, but slightly elevated expression was observed in the cerebral cortex, temporal lobe, and putamen.

Function Catalytic activity: CMP-N-acetylneuraminate + beta-D-galactosyl-(1->4)-beta-D-glucosyl-(1<->1)-ceramide = CMP + alpha-N-acetylneuraminy-(2->3)-beta-D-galactosyl-(1->4)-beta-D-glucosyl-(1<->1)-ceramide.,Disease:Defects in ST3GAL5 are the cause of Amish infantile epilepsy syndrome (AIES) [MIM:609056]. AIES is an autosomal recessive, infantile-onset symptomatic epilepsy associated with developmental stagnation and blindness.,Function:Catalyzes the formation of ganglioside GM3 (alpha-N-acetylneuraminy-(2,3-beta-D-galactosyl-1, 4-beta-D-glucosylceramide).,online information:GlycoGene database,online information:ST3Gal V,PTM:N-glycosylated.,similarity:Belongs to the glycosyltransferase 29 family.,tissue specificity:Ubiquitous. High expression in brain, skeletal muscle, placenta, and testis.,

Validation Data



Western blot analysis of lysates from HpeG2 cells, primary antibody was diluted at 1:1000, 4° over night



Immunohistochemical analysis of paraffin-embedded human liver cancer. 1, Antibody was diluted at 1:200(4° overnight). 2, Tris-EDTA,pH9.0 was used for antigen retrieval. 3,Secondary antibody was diluted at 1:200(room temperature, 45min).

Contact information

Orders: order.cn@immunoway.com
Support: support.cn@immunoway.com
Telephone: 400-8787-807(China)
Website: <http://www.immunoway.com.cn>
Address: 2200 Ringwood Ave San Jose, CA 95131 USA



Please scan the QR code
to access additional
product information:
SIAT9 Rabbit pAb

For Research Use Only. Not for Use in Diagnostic Procedures.

[Antibody](#) | [ELISA Kits](#) | [Protein](#) | [Reagents](#)