

## RLA0L Rabbit pAb

CatalogNo: YT7628

### Key Features

#### Host Species

- Rabbit

#### Reactivity

- Human

#### Applications

- WB,IHC

#### MW

- 35kD (Calculated)

#### Isotype

- IgG

### Recommended Dilution Ratios

WB 1:500-2000

IHC 1:50-300

### Storage

#### Storage\*

-15°C to -25°C/1 year(Do not lower than -25°C)

#### Formulation

Liquid in PBS containing 50% glycerol, 0.5% BSA and 0.02% sodium azide.

### Basic Information

#### Clonality

Polyclonal

### Immunogen Information

#### Immunogen

Synthesized peptide derived from human RLA0L AA range: 20-70

#### Specificity

This antibody detects endogenous levels of RLA0L at Human

### Target Information

#### Gene name

RPLP0P6

**Protein Name** RLA0L

**Organism**

**Gene ID**

**UniProt ID**

Human

[Q8NHW5](#);

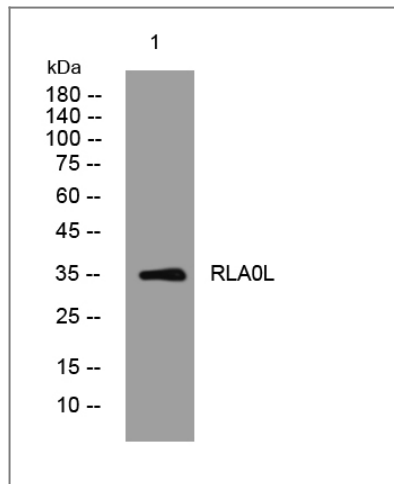
**Cellular  
Localization**

cytosolic large ribosomal subunit,preribosome, large subunit precursor,

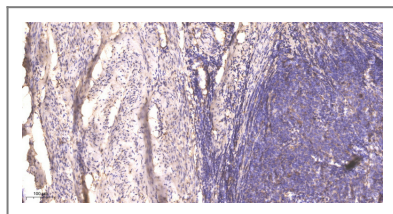
**Function**

Function:Ribosomal protein P0 is the functional equivalent of E.coli protein L10.,similarity:Belongs to the ribosomal protein L10P family.,subunit:P0 forms a pentameric complex by interaction with dimers of P1 and P2.,subunit:P0 forms a pentameric complex by interaction with dimers of P1 and P2. Interacts with Lassa virus Z protein.,

## Validation Data



Western blot analysis of lysates from MDA-MB cells, primary antibody was diluted at 1:1000, 4° over night



Immunohistochemical analysis of paraffin-embedded human cervical carcinoma. 1, Antibody was diluted at 1:200(4° overnight). 2, Tris-EDTA,pH9.0 was used for antigen retrieval. 3,Secondary antibody was diluted at 1:200(room temperature, 45min).

## Contact information

Orders: order.cn@immunoway.com  
Support: support.cn@immunoway.com  
Telephone: 400-8787-807(China)  
Website: <http://www.immunoway.com.cn>  
Address: 2200 Ringwood Ave San Jose, CA 95131 USA



Please scan the QR code  
to access additional  
product information:  
**RLA0L Rabbit pAb**

