

## F190B Rabbit pAb

CatalogNo: YT7595

### | Key Features

#### Host Species

- Rabbit

#### Reactivity

- Human, Mouse

#### Applications

- WB

#### MW

- 92kD (Calculated)

#### Isotype

- IgG

### | Recommended Dilution Ratios

WB 1:500-2000

### | Storage

**Storage\*** -15°C to -25°C/1 year (Do not lower than -25°C)

**Formulation** Liquid in PBS containing 50% glycerol, 0.5% BSA and 0.02% sodium azide.

### | Basic Information

**Clonality** Polyclonal

### | Immunogen Information

**Immunogen** Synthesized peptide derived from human F190B AA range: 609-659

**Specificity** This antibody detects endogenous levels of F190B at Human/Mouse

### | Target Information

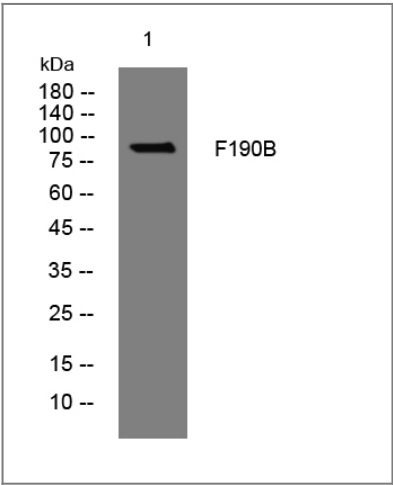
**Gene name** FAM190B KIAA1128 NP012

**Protein Name** F190B

Organism	Gene ID	UniProt ID
Human	<a href="#">54462;</a>	<a href="#">Q9H7U1;</a>
Mouse	<a href="#">72972;</a>	<a href="#">Q3UHI0;</a>

**Cellular Localization** Cytoplasm, cytoskeleton . Associates with microtubules in interphase. Has diffuse expression throughout the cell during mitosis. .

Validation Data



Western blot analysis of lysates from DU145 cells, primary antibody was diluted at 1:1000, 4°over night

Contact information

Orders: order.cn@immunoway.com  
Support: support.cn@immunoway.com  
Telephone: 400-8787-807(China)  
Website: <http://www.immunoway.com.cn>  
Address: 2200 Ringwood Ave San Jose, CA 95131 USA



Please scan the QR code to access additional product information:  
**F190B Rabbit pAb**

For Research Use Only. Not for Use in Diagnostic Procedures.

[Antibody](#) | [ELISA Kits](#) | [Protein](#) | [Reagents](#)