

## WHAL1 Rabbit pAb

CatalogNo: YT7588

### | Key Features

#### Host Species

- Rabbit

#### Reactivity

- Human

#### Applications

- WB

#### MW

- 17kD (Calculated)

#### Isotype

- IgG

### | Recommended Dilution Ratios

WB 1:500-2000

### | Storage

**Storage\*** -15°C to -25°C/1 year(Do not lower than -25°C)

**Formulation** Liquid in PBS containing 50% glycerol, 0.5% BSA and 0.02% sodium azide.

### | Basic Information

**Clonality** Polyclonal

### | Immunogen Information

**Immunogen** Synthesized peptide derived from human WHAL1 AA range: 95-145

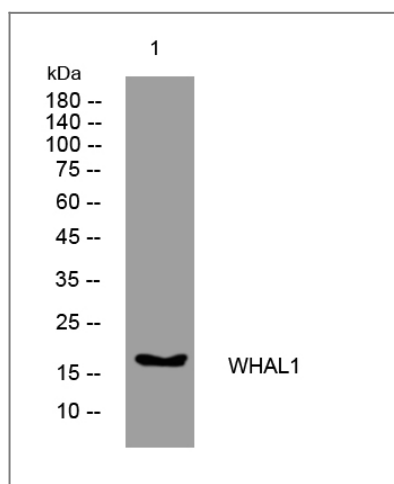
**Specificity** This antibody detects endogenous levels of WHAL1 at Human

### | Target Information

**Gene name** WHAMMP3 WHAMML1 WHDC1L1

|                     |                 |                |                          |
|---------------------|-----------------|----------------|--------------------------|
| <b>Protein Name</b> | WHAL1           |                |                          |
|                     | <b>Organism</b> | <b>Gene ID</b> | <b>UniProt ID</b>        |
|                     | Human           |                | <a href="#">Q1A5X7</a> ; |

## Validation Data



Western blot analysis of lysates from Hela cells, primary antibody was diluted at 1:1000, 4° over night

## Contact information

Orders: [order.cn@immunoway.com](mailto:order.cn@immunoway.com)  
 Support: [support.cn@immunoway.com](mailto:support.cn@immunoway.com)  
 Telephone: 400-8787-807(China)  
 Website: <http://www.immunoway.com.cn>  
 Address: 2200 Ringwood Ave San Jose, CA 95131 USA



Please scan the QR code to access additional product information:  
**WHAL1 Rabbit pAb**

For Research Use Only. Not for Use in Diagnostic Procedures.

[Antibody](#) | [ELISA Kits](#) | [Protein](#) | [Reagents](#)