

REXO4 Rabbit pAb

CatalogNo: YT7560

Key Features

Host Species

- Rabbit

Reactivity

- Human, Mouse

Applications

- WB, IHC

MW

- 46kD (Calculated)

Isotype

- IgG

Recommended Dilution Ratios

WB 1:500-2000

IHC 1:50-300

Storage

Storage*

-15°C to -25°C/1 year (Do not lower than -25°C)

Formulation

Liquid in PBS containing 50% glycerol, 0.5% BSA and 0.02% sodium azide.

Basic Information

Clonality

Polyclonal

Immunogen Information

Immunogen

Synthesized peptide derived from human REXO4 AA range: 312-362

Specificity

This antibody detects endogenous levels of REXO4 at Human/Mouse

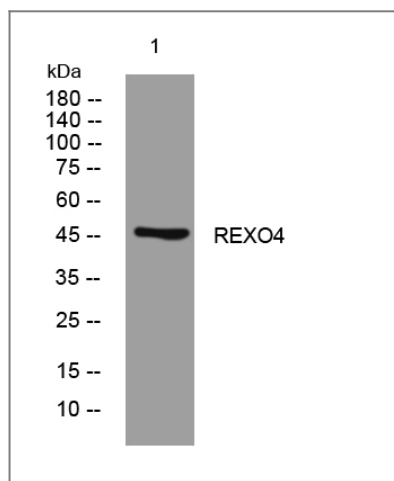
Target Information

Gene name

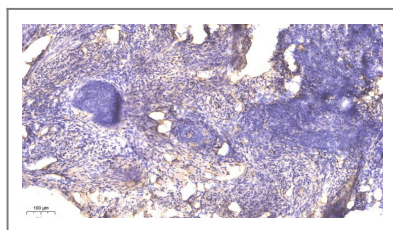
REXO4 PMC2 XPMC2H

Protein Name	REXO4		
	Organism	Gene ID	UniProt ID
	Human	57109;	Q9GZR2;
	Mouse	227656;	Q6PAQ4;
Cellular Localization	Nucleus, nucleolus .		
Function	similarity:Belongs to the REXO4 family.,similarity:Contains 1 exonuclease domain.,subunit:Can bind ESR1 and ESR2. This interaction is abrogated by estrogen and augmented by tamoxifen treatment.,		

Validation Data



Western blot analysis of lysates from SW480 cells, primary antibody was diluted at 1:1000, 4° over night



Immunohistochemical analysis of paraffin-embedded human cervical carcinoma. 1, Antibody was diluted at 1:200(4° overnight). 2, Tris-EDTA,pH9.0 was used for antigen retrieval. 3,Secondary antibody was diluted at 1:200(room temperature, 45min).

Contact information

Orders: order.cn@immunoway.com
 Support: support.cn@immunoway.com
 Telephone: 400-8787-807(China)
 Website: <http://www.immunoway.com.cn>
 Address: 2200 Ringwood Ave San Jose, CA 95131 USA



Please scan the QR code to access additional product information:
REXO4 Rabbit pAb

