

## GTDC1 Rabbit pAb

CatalogNo: YT7533

### | Key Features

#### Host Species

- Rabbit

#### Reactivity

- Human, Mouse, Rat

#### Applications

- WB

#### MW

- 50kD (Calculated)

#### Isotype

- IgG

### | Recommended Dilution Ratios

WB 1:500-2000

### | Storage

**Storage\*** -15°C to -25°C/1 year (Do not lower than -25°C)

**Formulation** Liquid in PBS containing 50% glycerol, 0.5% BSA and 0.02% sodium azide.

### | Basic Information

**Clonality** Polyclonal

### | Immunogen Information

**Immunogen** Synthesized peptide derived from human GTDC1 AA range: 273-323

**Specificity** This antibody detects endogenous levels of GTDC1 at Human/Mouse/Rat

### | Target Information

**Gene name** GTDC1

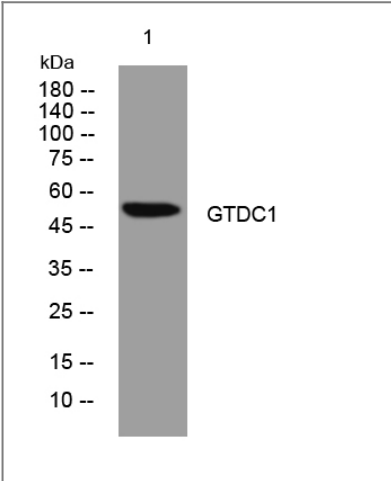
**Protein Name** GTDC1

Organism	Gene ID	UniProt ID
Human	<a href="#">79712;</a>	<a href="#">Q4AE62;</a>
Mouse	<a href="#">227835;</a>	<a href="#">Q8BW56;</a>
Rat	<a href="#">362129;</a>	<a href="#">Q53E76;</a>

**Tissue specificity** Ubiquitous. Expressed at high levels in the lung, brain, spleen, testis, placenta. ovary, pancreas, spleen and peripheral blood leukocytes. Expressed at low level in the colon, small intestine, kidney, skeletal muscle and thymus. Expressed at high level in colon adenocarcinoma.

**Function** similarity:Belongs to the glycosyltransferase 1 family.,tissue specificity:Ubiquitous. Expressed at high levels in the lung, spleen, testis and peripheral blood leukocytes.,

Validation Data



Western blot analysis of lysates from U2OS cells, primary antibody was diluted at 1:1000, 4°over night

Contact information

Orders: order.cn@immunoway.com  
Support: support.cn@immunoway.com  
Telephone: 400-8787-807(China)  
Website: <http://www.immunoway.com.cn>  
Address: 2200 Ringwood Ave San Jose, CA 95131 USA



Please scan the QR code to access additional product information:  
**GTDC1 Rabbit pAb**