

## SARDH Rabbit pAb

CatalogNo: YT7522

### Key Features

#### Host Species

- Rabbit

#### Reactivity

- Human, Mouse, Rat

#### Applications

- WB, ELISA, IHC

#### MW

- 101kD (Calculated)

#### Isotype

- IgG

### Recommended Dilution Ratios

WB 1:500-2000

IHC 1:50-300

ELISA 1:2000-20000

### Storage

#### Storage\*

-15°C to -25°C/1 year (Do not lower than -25°C)

#### Formulation

Liquid in PBS containing 50% glycerol, 0.5% BSA and 0.02% sodium azide.

### Basic Information

#### Clonality

Polyclonal

### Immunogen Information

#### Immunogen

Synthesized peptide derived from human SARDH AA range: 279-329

#### Specificity

This antibody detects endogenous levels of SARDH at Human/Mouse/Rat

### Target Information

#### Gene name

SARDH DMGDHL1

Protein Name SARDH

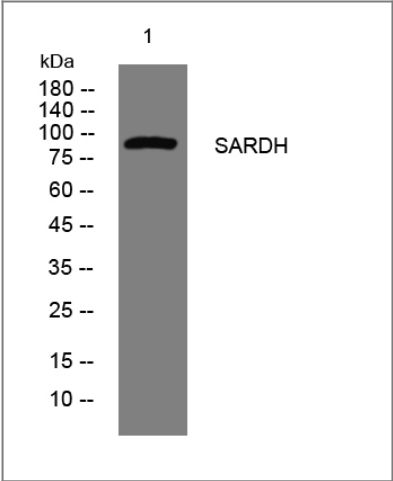
Organism	Gene ID	UniProt ID
Human	<a href="#">1757;</a>	<a href="#">Q9UL12;</a>
Mouse	<a href="#">192166;</a>	<a href="#">Q99LB7;</a>
Rat	<a href="#">114123;</a>	<a href="#">Q64380;</a>

Cellular Localization Mitochondrion matrix .

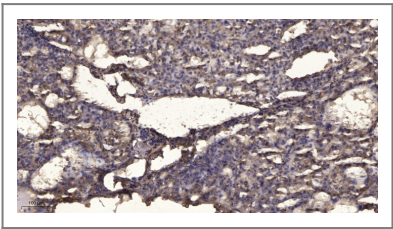
Tissue specificity Expressed in pancreas, liver and kidney.

Function Catalytic activity:Sarcosine + acceptor + H(2)O = glycine + formaldehyde + reduced acceptor.,cofactor:Binds 1 FAD covalently per monomer.,Disease:Defects in SARDH are a ause of sarcosinemia [MIM:268900]. Sarcosinemia is a metabolic disorder characterized by an increased concentration of sarcosine in plasma and urine due to sarcosine dehydrogenase deficiency. Prevalence has been estimated at 1:28'000 to 1:350'000 in newborn screening programs. Sarcosinemia is most probably a benign condition without significant clinical problems. It is transmitted in an autosomal recessive manner.,pathway:Amine and polyamine degradation; sarcosine degradation; formaldehyde and glycine from sarcosine: step 1/1.,similarity:Belongs to the gcvT family.,

Validation Data



Western blot analysis of lysates from 3T3 cells, primary antibody was diluted at 1:1000, 4° over night



Immunohistochemical analysis of paraffin-embedded human liver cancer. 1, Antibody was diluted at 1:200(4° overnight). 2, Tris-EDTA,pH9.0 was used for antigen retrieval. 3,Secondary antibody was diluted at 1:200(room temperature, 45min).

Contact information

Orders: order.cn@immunoway.com  
Support: support.cn@immunoway.com  
Telephone: 400-8787-807(China)  
Website: <http://www.immunoway.com.cn>  
Address: 2200 Ringwood Ave San Jose, CA 95131 USA



Please scan the QR code  
to access additional  
product information:  
**SARDH Rabbit pAb**

---

For Research Use Only. Not for Use in Diagnostic Procedures.

[Antibody](#) | [ELISA Kits](#) | [Protein](#) | [Reagents](#)