

CPPED Rabbit pAb

CatalogNo: YT7510

| Key Features

Host Species

- Rabbit

Reactivity

- Human, Mouse, Rat

Applications

- WB

MW

- 35kD (Calculated)

Isotype

- IgG

| Recommended Dilution Ratios

WB 1:500-2000

| Storage

Storage* -15°C to -25°C/1 year (Do not lower than -25°C)

Formulation Liquid in PBS containing 50% glycerol, 0.5% BSA and 0.02% sodium azide.

| Basic Information

Clonality Polyclonal

| Immunogen Information

Immunogen Synthesized peptide derived from human CPPED AA range: 68-118

Specificity This antibody detects endogenous levels of CPPED at Human/Mouse/Rat

| Target Information

Gene name CPPED1 CSTP1

Protein Name

CPPED

Organism**Gene ID****UniProt ID**

Human

[55313;](#)[Q9BRF8;](#)

Mouse

[223978;](#)[Q8BFS6;](#)

Rat

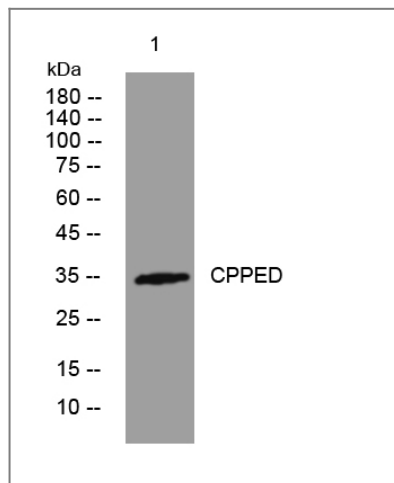
[302890;](#)[Q66H71;](#)**Cellular Localization**

Cytoplasm .

Tissue specificity Expressed in subcutaneous adipose tissue.**Function**

cofactor: Binds 2 divalent metal cations., induction: Transactivated by the large envelope protein of the hepatitis B virus (HBV)., similarity: Belongs to the metallophosphoesterase superfamily. CPPED1 family.,

Validation Data



Western blot analysis of lysates from SW480 cells, primary antibody was diluted at 1:1000, 4° over night

Contact information

Orders: order.cn@immunoway.com
Support: support.cn@immunoway.com
Telephone: 400-8787-807(China)
Website: <http://www.immunoway.com.cn>
Address: 2200 Ringwood Ave San Jose, CA 95131 USA



Please scan the QR code to access additional product information:
CPPED Rabbit pAb