

## ACTY Rabbit pAb

CatalogNo: YT7504

### Key Features

#### Host Species

- Rabbit

#### Reactivity

- Human, Mouse

#### Applications

- WB

#### MW

- 41kD (Calculated)

#### Isotype

- IgG

### Recommended Dilution Ratios

WB 1:500-2000

### Storage

**Storage\*** -15°C to -25°C/1 year (Do not lower than -25°C)

**Formulation** Liquid in PBS containing 50% glycerol, 0.5% BSA and 0.02% sodium azide.

### Basic Information

**Clonality** Polyclonal

### Immunogen Information

**Immunogen** Synthesized peptide derived from human ACTY AA range: 29-79

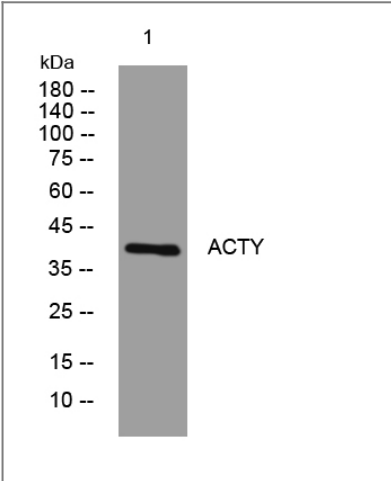
**Specificity** This antibody detects endogenous levels of ACTY at Human/Mouse

### Target Information

**Gene name** ACTR1B CTRN2

Protein Name	ACTY		
	Organism	Gene ID	UniProt ID
	Human	<a href="#">10120;</a>	<a href="#">P42025;</a>
	Mouse	<a href="#">226977;</a>	<a href="#">Q8R5C5;</a>
Cellular Localization	Cytoplasm, cytoskeleton. Cytoplasm, cytoskeleton, microtubule organizing center, centrosome.		
Function	Function:Component of a multi-subunit complex involved in microtubule based vesicle motility. It is associated with the centrosome.,similarity:Belongs to the actin family.,similarity:Belongs to the actin family. ARP1 subfamily.,		

## Validation Data



Western blot analysis of lysates from AD293 cells, primary antibody was diluted at 1:1000, 4°over night

## Contact information

Orders: [order.cn@immunoway.com](mailto:order.cn@immunoway.com)  
 Support: [support.cn@immunoway.com](mailto:support.cn@immunoway.com)  
 Telephone: 400-8787-807(China)  
 Website: <http://www.immunoway.com.cn>  
 Address: 2200 Ringwood Ave San Jose, CA 95131 USA



Please scan the QR code to access additional product information:  
**ACTY Rabbit pAb**