

## PPR32 Rabbit pAb

CatalogNo: YT7498

### Key Features

**Host Species**

- Rabbit

**Reactivity**

- Human, Mouse, Rat

**Applications**

- WB, IHC

**MW**

- 47kD (Calculated)

**Isotype**

- IgG

### Recommended Dilution Ratios

**WB 1:500-2000****IHC 1:50-300**

### Storage

**Storage\***

-15°C to -25°C/1 year (Do not lower than -25°C)

**Formulation**

Liquid in PBS containing 50% glycerol, 0.5% BSA and 0.02% sodium azide.

### Basic Information

**Clonality**

Polyclonal

### Immunogen Information

**Immunogen**

Synthesized peptide derived from human PPR32 AA range: 72-122

**Specificity**

This antibody detects endogenous levels of PPR32 at Human/Mouse/Rat

### Target Information

**Gene name**

PPP1R32 C11orf66

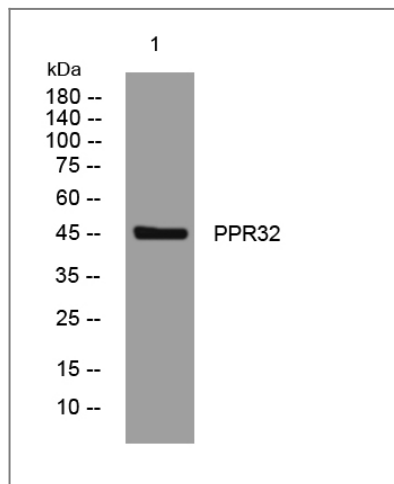
**Protein Name** PPR32

Organism	Gene ID	UniProt ID
Human	<a href="#">220004;</a>	<a href="#">Q7Z5V6;</a>
Mouse	<a href="#">67752;</a>	<a href="#">Q148A4;</a>
Rat	<a href="#">252958;</a>	<a href="#">Q66HR9;</a>

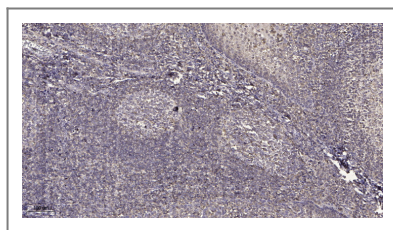
**Cellular Localization**

Cell projection, cilium . Cytoplasm . Localized to the cilia of polarized ependymal cells during development and at the adult stage. Preferentially locates between the peripheral microtubules of the axoneme and the ciliary membrane. .

## Validation Data



Western blot analysis of lysates from MCF-7 cells, primary antibody was diluted at 1:1000, 4° over night



Immunohistochemical analysis of paraffin-embedded human tonsil. 1, Antibody was diluted at 1:200(4° overnight). 2, Tris-EDTA,pH9.0 was used for antigen retrieval. 3,Secondary antibody was diluted at 1:200(room temperature, 45min).

## Contact information

Orders: order.cn@immunoway.com  
Support: support.cn@immunoway.com  
Telephone: 400-8787-807(China)  
Website: <http://www.immunoway.com.cn>  
Address: 2200 Ringwood Ave San Jose, CA 95131 USA



Please scan the QR code to access additional product information:  
**PPR32 Rabbit pAb**

