

## ATAD5 Rabbit pAb

CatalogNo: YT7475

### | Key Features

#### Host Species

- Rabbit

#### Reactivity

- Human, Mouse

#### Applications

- WB

#### MW

- 203kD (Calculated)

#### Isotype

- IgG

### | Recommended Dilution Ratios

WB 1:500-2000

### | Storage

**Storage\*** -15°C to -25°C/1 year (Do not lower than -25°C)

**Formulation** Liquid in PBS containing 50% glycerol, 0.5% BSA and 0.02% sodium azide.

### | Basic Information

**Clonality** Polyclonal

### | Immunogen Information

**Immunogen** Synthesized peptide derived from human ATAD5 AA range: 1054-1104

**Specificity** This antibody detects endogenous levels of ATAD5 at Human/Mouse

### | Target Information

**Gene name** ATAD5 C17orf41 FRAG1

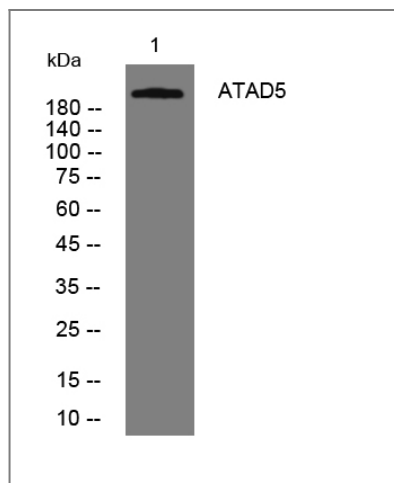
**Protein Name** ATAD5

Organism	Gene ID	UniProt ID
Human	<a href="#">79915;</a>	<a href="#">Q96QE3;</a>
Mouse	<a href="#">237877;</a>	<a href="#">Q4QY64;</a>

**Cellular Localization** Nucleus .

**Function** Function:Involved in DNA damage response. Involved in a RAD9A-related damage checkpoint, a pathway that is important in determining whether DNA damage is compatible with cell survival or whether it requires cell elimination by apoptosis. Modulates the RAD9A interaction with BCL2 and thereby induces DNA damages-induced apoptosis.,PTM:Phosphorylated upon DNA damage, probably by ATM or ATR. ATR may stimulate the RAD9A dissociation.,sequence Caution:Contaminating sequence. Potential poly-A sequence.,similarity:Belongs to the AAA ATPase family.,subunit:Interacts with RB1 predominantly in G1 phase via its LXCXE motif. Interacts with RAD9A in growing cells. The interaction with RAD9A is reduced after exposure to DNA replication-inhibiting agents.,

## Validation Data



Western blot analysis of lysates from HeLa cells, primary antibody was diluted at 1:1000, 4° over night

## Contact information

Orders: order.cn@immunoway.com  
Support: support.cn@immunoway.com  
Telephone: 400-8787-807(China)  
Website: <http://www.immunoway.com.cn>  
Address: 2200 Ringwood Ave San Jose, CA 95131 USA



Please scan the QR code to access additional product information:  
**ATAD5 Rabbit pAb**

