

PP12C Rabbit pAb

CatalogNo: YT7460

Key Features

Host Species

- Rabbit

Reactivity

- Human, Mouse

Applications

- WB, IHC

MW

- 86kD (Calculated)

Isotype

- IgG

Recommended Dilution Ratios

WB 1:500-2000

IHC 1:50-300

Storage

Storage*

-15°C to -25°C/1 year (Do not lower than -25°C)

Formulation

Liquid in PBS containing 50% glycerol, 0.5% BSA and 0.02% sodium azide.

Basic Information

Clonality

Polyclonal

Immunogen Information

Immunogen

Synthesized peptide derived from human PP12C AA range: 542-592

Specificity

This antibody detects endogenous levels of PP12C at Human/Mouse

Target Information

Gene name

PPP1R12C LENG3 MBS85

Protein Name PP12C

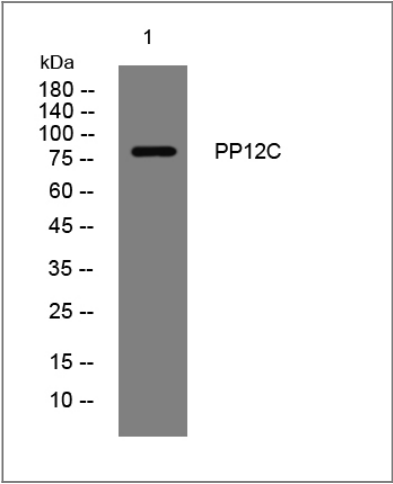
Organism	Gene ID	UniProt ID
Human	54776 ;	Q9BZL4 ;
Mouse	232807 ;	Q3UMT1 ;

Cellular Localization Cytoplasm . Cytoplasm, cytoskeleton, stress fiber .

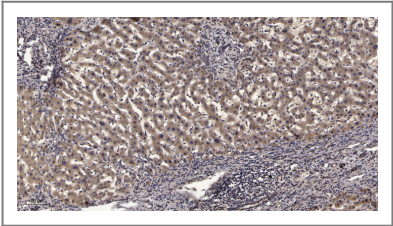
Tissue specificity Ubiquitously expressed. Highly expressed in heart.

Function Caution:Although assigned as two separate genes (PPP1R12C and LENG3), it is probable that LENG3 does not exist by itself and is a part of the PPP1R12C gene.,Function:Regulates myosin phosphatase activity.,PTM:Phosphorylated upon DNA damage, probably by ATM or ATR.,sequence Caution:Unspliced mRNA.,similarity:Contains 4 ANK repeats.,subcellular location:Along actomyosin filaments and stress fibers.,subunit:PP1 comprises a catalytic subunit, PPP1CA, PPP1CB or PPP1CC, and one or several targeting or regulatory subunits. PPP1R12C mediates binding to myosin. Interacts via its N-terminus with PPP1CB. Interacts with IL16. Interacts with the coiled-coil domain of MPRIP.,tissue specificity:Ubiquitously expressed. Highly expressed in heart.,

Validation Data



Western blot analysis of lysates from VEC cells, primary antibody was diluted at 1:1000, 4° over night



Immunohistochemical analysis of paraffin-embedded human liver cancer. 1, Antibody was diluted at 1:200(4° overnight). 2, Tris-EDTA,pH9.0 was used for antigen retrieval. 3,Secondary antibody was diluted at 1:200(room temperature, 45min).

Contact information

Orders: order.cn@immunoway.com
Support: support.cn@immunoway.com
Telephone: 400-8787-807(China)
Website: <http://www.immunoway.com.cn>
Address: 2200 Ringwood Ave San Jose, CA 95131 USA



Please scan the QR code
to access additional
product information:
PP12C Rabbit pAb

For Research Use Only. Not for Use in Diagnostic Procedures.

[Antibody](#) | [ELISA Kits](#) | [Protein](#) | [Reagents](#)