

NOSTN Rabbit pAb

CatalogNo: YT7453

Key Features

Host Species

- Rabbit

Reactivity

- Human, Mouse, Rat

Applications

- WB

MW

- 56kD (Calculated)

Isotype

- IgG

Recommended Dilution Ratios

WB 1:500-2000

Storage

Storage* -15°C to -25°C/1 year (Do not lower than -25°C)

Formulation Liquid in PBS containing 50% glycerol, 0.5% BSA and 0.02% sodium azide.

Basic Information

Clonality Polyclonal

Immunogen Information

Immunogen Synthesized peptide derived from human NOSTN AA range: 309-359

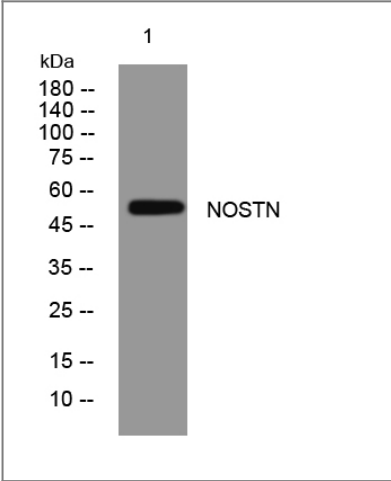
Specificity This antibody detects endogenous levels of NOSTN at Human/Mouse/Rat

Target Information

Gene name NOSTRIN

Protein Name	NOSTN		
	Organism	Gene ID	UniProt ID
	Human	115677 ;	Q8IVI9 ;
	Mouse	329416 ;	Q6WKZ7 ;
	Rat	311111 ;	Q5I0D6 ;
Cellular Localization	[Isoform 1]: Cell membrane ; Peripheral membrane protein ; Cytoplasmic side . Cytoplasmic vesicle . Cytoplasm, cytoskeleton . Enriched in selected actin structures (PubMed:16234328, PubMed:16376344).; [Isoform 3]: Nucleus .		
Tissue specificity	Expressed at highest levels in heart, kidney, placenta and lung, and at lowest levels in brain, thymus and spleen. Present in vascular endothelial cells and placenta. Over-expressed in placenta from women with pre-eclampsia (at protein level).		
Function	Domain:The FCH domain is necessary for membrane targeting.,Domain:The SH3 domain mediates interaction with NOS3, DNM2 and WASL.,Function:Multivalent adapter protein which may decrease NOS3 activity by inducing its translocation away from the plasma membrane.,similarity:Contains 1 FCH domain.,similarity:Contains 1 SH3 domain.,subcellular location:Enriched in selected actin structures.,subunit:Homotrimer. Interacts with DAB2 (By similarity). Interacts with NOS3, DNM2, WASL and CAV1.,tissue specificity:Expressed at highest levels in heart, kidney, placenta and lung, and at lowest levels in brain, thymus and spleen. Present in vascular endothelial cells and placenta. Over-expressed in placenta from women with pre-eclampsia (at protein level).,		

Validation Data



Western blot analysis of lysates from MDA-MB cells, primary antibody was diluted at 1:1000, 4°over night

Contact information

Orders: order.cn@immunoway.com
Support: support.cn@immunoway.com
Telephone: 400-8787-807(China)
Website: <http://www.immunoway.com.cn>
Address: 2200 Ringwood Ave San Jose, CA 95131 USA



Please scan the QR code
to access additional
product information:
NOSTN Rabbit pAb

For Research Use Only. Not for Use in Diagnostic Procedures.

[Antibody](#) | [ELISA Kits](#) | [Protein](#) | [Reagents](#)