

WFD13 Rabbit pAb

CatalogNo: YT7450

Key Features

Host Species

- Rabbit

Reactivity

- Human, Mouse

Applications

- IHC, IF

MW

- 10kD (Calculated)

Isotype

- IgG

Storage

Storage* -15°C to -25°C/1 year (Do not lower than -25°C)

Formulation Liquid in PBS containing 50% glycerol, 0.5% BSA and 0.02% sodium azide.

Recommended Dilution Ratios

IHC 1:50-200

IF 1:50-200

Basic Information

Clonality Polyclonal

Immunogen Information

Immunogen Synthesized peptide derived from human WFD13 AA range: 28-78

Specificity This antibody detects endogenous levels of WFD13 at Human/Mouse

Target Information

Gene name WFDC13 C20orf138 WAP13

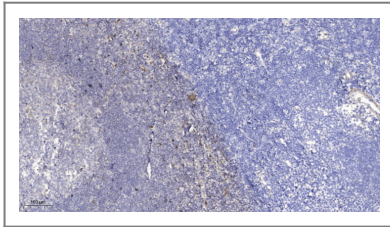
Protein Name WFD13

Organism	Gene ID	UniProt ID
Human	164237 ;	Q8IUB5 ;
Mouse	408190 ;	Q5DQQ6 ;

Cellular Localization Secreted .

Function miscellaneous:Although this protein was isolated in a region containing several WAP proteins and was defined as a WAP protein, it does not contain a classical WAP domain.,

Validation Data



Immunohistochemical analysis of paraffin-embedded human tonsil. 1, Antibody was diluted at 1:200(4° overnight). 2, Tris-EDTA,pH9.0 was used for antigen retrieval. 3,Secondary antibody was diluted at 1:200(room temperature, 30min).

Contact information

Orders: order.cn@immunoway.com
Support: support.cn@immunoway.com
Telephone: 400-8787-807(China)
Website: <http://www.immunoway.com.cn>
Address: 2200 Ringwood Ave San Jose, CA 95131 USA



Please scan the QR code to access additional product information:
WFD13 Rabbit pAb

For Research Use Only. Not for Use in Diagnostic Procedures.

[Antibody](#) | [ELISA Kits](#) | [Protein](#) | [Reagents](#)