

IPP4 Rabbit pAb

CatalogNo: YT7404

Key Features

Host Species

- Rabbit

Reactivity

- Human

Applications

- WB,IHC

MW

- 22kD (Calculated)

Isotype

- IgG

Recommended Dilution Ratios

WB 1:500-2000

IHC 1:50-300

Storage

Storage*

-15°C to -25°C/1 year(Do not lower than -25°C)

Formulation

Liquid in PBS containing 50% glycerol, 0.5% BSA and 0.02% sodium azide.

Basic Information

Clonality

Polyclonal

Immunogen Information

Immunogen

Synthesized peptide derived from human IPP4 AA range: 87-137

Specificity

This antibody detects endogenous levels of IPP4 at Human

Target Information

Gene name

PPP1R2P9

Protein Name IPP4

Organism

Gene ID

UniProt ID

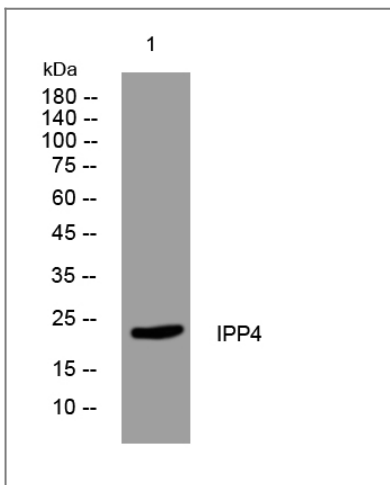
Human

[O14990](#);

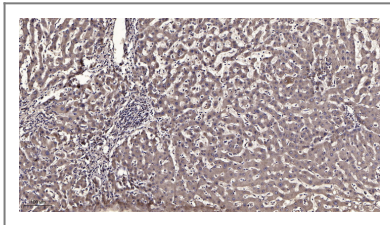
Cellular Localization protein phosphatase type 1 complex,

Tissue specificity Detected in sperm (at protein level).

Validation Data



Western blot analysis of lysates from PC-12 cells, primary antibody was diluted at 1:1000, 4° over night



Immunohistochemical analysis of paraffin-embedded human liver cancer. 1, Antibody was diluted at 1:200(4° overnight). 2, Tris-EDTA,pH9.0 was used for antigen retrieval. 3,Secondary antibody was diluted at 1:200(room temperature, 45min).

Contact information

Orders: order.cn@immunoway.com
Support: support.cn@immunoway.com
Telephone: 400-8787-807(China)
Website: <http://www.immunoway.com.cn>
Address: 2200 Ringwood Ave San Jose, CA 95131 USA



Please scan the QR code to access additional product information:
IPP4 Rabbit pAb