

## OR9G1 Rabbit pAb

CatalogNo: YT7387

### Key Features

#### Host Species

- Rabbit

#### Reactivity

- Human

#### Applications

- WB

#### MW

- 34kD (Calculated)

#### Isotype

- IgG

### Recommended Dilution Ratios

WB 1:500-2000

### Storage

**Storage\*** -15°C to -25°C/1 year(Do not lower than -25°C)

**Formulation** Liquid in PBS containing 50% glycerol, 0.5% BSA and 0.02% sodium azide.

### Basic Information

**Clonality** Polyclonal

### Immunogen Information

**Immunogen** Synthesized peptide derived from human OR9G1 AA range: 190-240

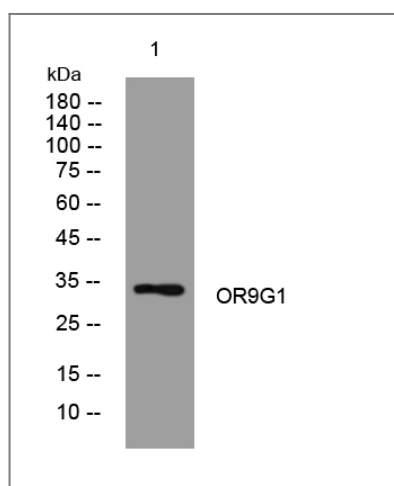
**Specificity** This antibody detects endogenous levels of OR9G1 at Human

### Target Information

**Gene name** OR9G1 OR9G5

|                              |   |                         |                         |
|------------------------------|---|-------------------------|-------------------------|
| <b>Protein Name</b>          | OR9G1   |                         |                         |
|                              | <b>Organism</b>   | <b>Gene ID</b>          | <b>UniProt ID</b>       |
|                              | Human   | <a href="#">390174;</a> | <a href="#">Q8NH87;</a> |
| <b>Cellular Localization</b> | Cell membrane; Multi-pass membrane protein.   |                         |                         |
| <b>Function</b>              | Function:Odorant receptor ,miscellaneous:The sequence shown here is derived from an EMBL/GenBank/DDBJ third party annotation (TPA) entry.,similarity:Belongs to the G-protein coupled receptor 1 family., |                         |                         |

## Validation Data



Western blot analysis of lysates from HuvEc cells, primary antibody was diluted at 1:1000, 4°over night

## Contact information

Orders: [order.cn@immunoway.com](mailto:order.cn@immunoway.com)  
 Support: [support.cn@immunoway.com](mailto:support.cn@immunoway.com)  
 Telephone: 400-8787-807(China)  
 Website: <http://www.immunoway.com.cn>  
 Address: 2200 Ringwood Ave San Jose, CA 95131 USA



Please scan the QR code to access additional product information:  
**OR9G1 Rabbit pAb**

For Research Use Only. Not for Use in Diagnostic Procedures.

[Antibody](#) | [ELISA Kits](#) | [Protein](#) | [Reagents](#)