

FBW1A Rabbit pAb

CatalogNo: YT7372

Key Features

Host Species

- Rabbit

Reactivity

- Human, Mouse

Applications

- WB

MW

- 67kD (Calculated)

Isotype

- IgG

Recommended Dilution Ratios

WB 1:500-2000

Storage

Storage* -15°C to -25°C/1 year (Do not lower than -25°C)

Formulation Liquid in PBS containing 50% glycerol, 0.5% BSA and 0.02% sodium azide.

Basic Information

Clonality Polyclonal

Immunogen Information

Immunogen Synthesized peptide derived from human FBW1A AA range: 43-93

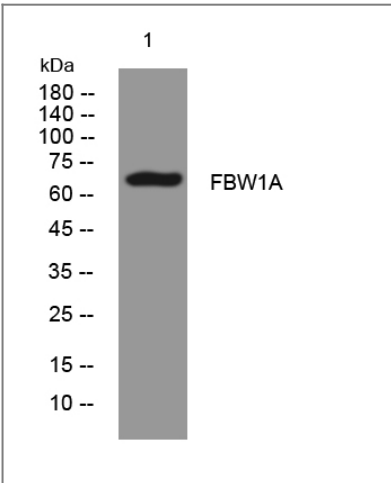
Specificity This antibody detects endogenous levels of FBW1A at Human/Mouse

Target Information

Gene name BTRC BTRCP FBW1A FBXW1A

Protein Name	FBW1A		
	Organism	Gene ID	UniProt ID
	Human	8945;	Q9Y297;
	Mouse	12234;	Q3ULA2;
Cellular Localization	Cytoplasm . Nucleus .		
Tissue specificity	Expressed in epididymis (at protein level).		
Function	<p>Function:Substrate recognition component of a SCF (SKP1-CUL1-F-box protein) E3 ubiquitin-protein ligase complex which mediates the ubiquitination and subsequent proteasomal degradation of target proteins. Probably recognizes and binds to phosphorylated target proteins. SCF(BTRC) mediates the ubiquitination of CTNNB1 and participates in Wnt signaling. SCF(BTRC) mediates the ubiquitination of NFKBIA, NFKBIB and NFKBIE; the degradation frees the associated NFKB1 to translocate into the nucleus and to activate transcription. SCF(BTRC) mediates the ubiquitination of phosphorylated NFKB1/nuclear factor NF-kappa-B p105 subunit, ATF4, SMAD3, SMAD4, CDC25A, DLG1, FBXO5 and probably NFKB2. May be involved in ubiquitination and subsequent proteasomal degradation through a DBB1-CUL4 E3 ubiquitin-protein ligase.,pathway:Protein modification; protein ubiquitination.,similarity:Contains 1 F-box domain.,similarity:Contains 7 WD repeats.,subunit:Self-associates. Component of the SCF(BTRC) complex formed of CUL1, SKP1A, RBX1 and a BTRC dimer, in which it interacts directly with SKP1A. Interacts with phosphorylated ubiquitination substrates CTNNB1, NFKBIA, NFKBIB, NFKBIE, NFKB1/nuclear factor NF-kappa-B p105 subunit, ATF4, SMAD3, SMAD4, CDC25A, DLG1 and FBXO5; the interaction requires the phosphorylation of the two serine residues in the destruction motif D-S-G-X(2,3)-S. Binds UBQLN1. Interacts with CDC34 and UBE2R2. Interacts with HIV-1 Vpu. Interacts with FBXW11. Interacts with CUL4A and DDB1.,</p>		

Validation Data



Western blot analysis of lysates from VEC cells, primary antibody was diluted at 1:1000, 4°over night

Contact information

Orders: order.cn@immunoway.com
Support: support.cn@immunoway.com
Telephone: 400-8787-807(China)
Website: <http://www.immunoway.com.cn>
Address: 2200 Ringwood Ave San Jose, CA 95131 USA



Please scan the QR code
to access additional
product information:
FBW1A Rabbit pAb

For Research Use Only. Not for Use in Diagnostic Procedures.

[Antibody](#) | [ELISA Kits](#) | [Protein](#) | [Reagents](#)