

PIFO Rabbit pAb

CatalogNo: YT7359

Key Features

Host Species

- Rabbit

Reactivity

- Human, Mouse

Applications

- WB, ELISA, IHC

MW

- 21kD (Calculated)

Isotype

- IgG

Recommended Dilution Ratios

WB 1:500-2000**IHC 1:50-300****ELISA 1:2000-20000**

Storage

Storage*

-15°C to -25°C/1 year (Do not lower than -25°C)

Formulation

Liquid in PBS containing 50% glycerol, 0.5% BSA and 0.02% sodium azide.

Basic Information

Clonality

Polyclonal

Immunogen Information

Immunogen

Synthesized peptide derived from human PIFO AA range: 47-97

Specificity

This antibody detects endogenous levels of PIFO at Human/Mouse

Target Information

Gene name

PIFO C1orf88

Protein Name

PIFO

Organism**Gene ID****UniProt ID**

Human

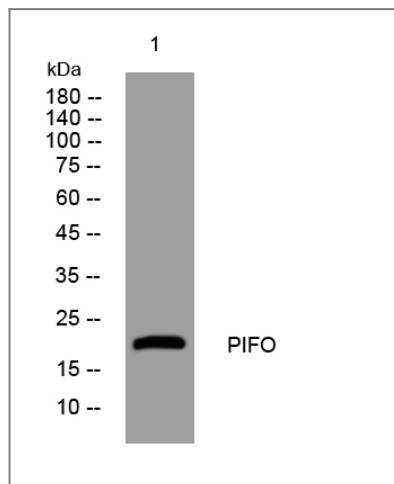
[128344;](#)[Q8TCI5;](#)

Mouse

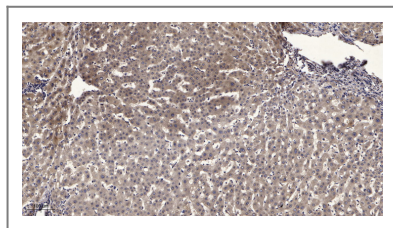
[100503311;](#)[Q9D9W1;](#)**Cellular
Localization**

Cytoplasmic vesicle . Golgi apparatus, trans-Golgi network . Cytoplasm . Accumulates specifically at the basal body and ciliary necklace during the early steps of cilia assembly and disassembly, when structural, functional and regulatory proteins are delivered to cilia. At S phase, accumulates in vesicles and declines during mitosis. .

Validation Data



Western blot analysis of lysates from SH-SY5Y cells, primary antibody was diluted at 1:1000, 4° over night



Immunohistochemical analysis of paraffin-embedded human liver cancer. 1, Antibody was diluted at 1:200(4° overnight). 2, Tris-EDTA,pH9.0 was used for antigen retrieval. 3,Secondary antibody was diluted at 1:200(room temperature, 45min).

Contact information

Orders: order.cn@immunoway.com
Support: support.cn@immunoway.com
Telephone: 400-8787-807(China)
Website: <http://www.immunoway.com.cn>
Address: 2200 Ringwood Ave San Jose, CA 95131 USA



Please scan the QR code to access additional product information:
PIFO Rabbit pAb

