

RUVB1 Rabbit pAb

CatalogNo: YT7330

Key Features

Host Species

- Rabbit

Reactivity

- Human, Mouse, Rat

Applications

- WB

MW

- 50kD (Calculated)

Isotype

- IgG

Recommended Dilution Ratios

WB 1:500-2000

Storage

Storage*

-15°C to -25°C/1 year (Do not lower than -25°C)

Formulation

Liquid in PBS containing 50% glycerol, 0.5% BSA and 0.02% sodium azide.

Basic Information

Clonality

Polyclonal

Immunogen Information

Immunogen

Synthesized peptide derived from human RUVB1 AA range: 195-245

Specificity

This antibody detects endogenous levels of RUVB1 at Human/Mouse/Rat

Target Information

Gene name

RUVBL1 INO80H NMP238 TIP49 TIP49A

Protein Name	RUVB1		
	Organism	Gene ID	UniProt ID
	Human	8607 ;	Q9Y265 ;
	Mouse	56505 ;	P60122 ;
	Rat	65137 ;	P60123 ;

Cellular Localization

Nucleus matrix. Nucleus, nucleoplasm. Cytoplasm . Membrane . Cytoplasm, cytoskeleton, microtubule organizing center, centrosome. Dynein axonemal particle . Mainly localized in the nucleus, associated with nuclear matrix or in the nuclear cytosol, although it is also present in the cytoplasm and associated with the cell membranes. In prophase and prometaphase it is located at the centrosome and the branching microtubule spindles. After mitotic nuclear membrane disintegration it accumulates at the centrosome and sites of tubulin polymerization. As cells pass through metaphase and into telophase it is located close to the centrosome at the early phase of tubulin polymerization. In anaphase it accumulates at the zone of tubule interdigitation. In telophase it is found at polar tubule overlap, and it reappears at the site of chromosomal decondensation in the daughter cells.

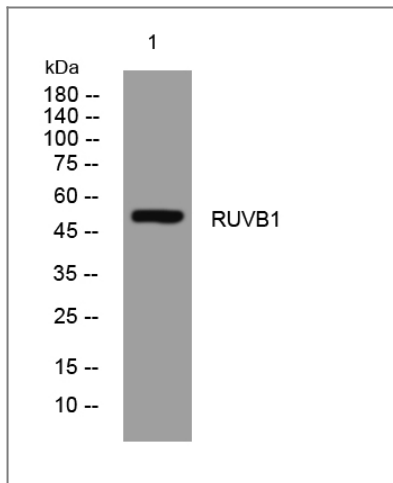
Tissue specificity

Ubiquitously expressed with high expression in heart, skeletal muscle and testis.

Function

Domain: Binding to MYC is dependent on a Myc domain essential for oncogenic activity., Function: Essential for cell proliferation., Function: May be able to bind plasminogen at cell surface and enhance plasminogen activation., Function: Possesses single-stranded DNA-stimulated ATPase and ATP-dependent DNA helicase (3' to 5') activity. Component of the NuA4 histone acetyltransferase complex which is involved in transcriptional activation of select genes principally by acetylation of nucleosomal histones H4 and H2A. This modification may both alter nucleosome - DNA interactions and promote interaction of the modified histones with other proteins which positively regulate transcription. This complex may be required for the activation of transcriptional programs associated with oncogene and proto-oncogene mediated growth induction, tumor suppressor mediated growth arrest and replicative senescence, apoptosis, and DNA repair. The NuA4 complex ATPase and helicase activities seem to be, at least in part, contributed by the association of RUVBL1 and RUVBL2 with EP400. NuA4 may also play a direct role in DNA repair when recruited to sites of DNA damage. RUVBL1 plays an essential role in oncogenic transformation by MYC and also modulates transcriptional activation by the LEF1/TCF1-CTNNB1 complex., miscellaneous: High level of autoantibodies against RUVBL1 are detected in sera of patients with autoimmune diseases such as polymyositis/dermatomyositis and autoimmune hepatitis., similarity: Belongs to the ruvB family., subcellular location: Mainly localized in the nucleus, associated with nuclear matrix or in the nuclear cytosol, although it is also present in the cytoplasm and associated with the cell membranes. In prophase and prometaphase it is located at the centrosome and the branching microtubule spindles. After mitotic nuclear membrane disintegration it accumulates at the centrosome and sites of tubulin polymerization. As cells pass through metaphase and into telophase it is located close to the centrosome at the early phase of tubulin polymerization. In anaphase it accumulates at the zone of tubule interdigitation. In telophase it is found at polar tubule overlap, and it reappears at the site of chromosomal decondensation in the daughter cells., subunit: Forms homotypic and heterotypic interactions. Forms a multimeric complex with RUVBL2. Interacts with the transcriptional activation domain of MYC. Component of the RNA polymerase II holoenzyme complex. May also act to bridge the LEF1/TCF1-CTNNB1 complex and TBP. Component of the NuA4 histone acetyltransferase complex which contains the catalytic subunit HTATIP/TIP60 and the subunits EP400, TRRAP/PAF400, BRD8/SMAP, EPC1, DMAP1/DNMAP1, RUVBL1/TIP49, RUVBL2, ING3, actin, ACTL6A/BAF53A, MORF4L1/MRG15, MORF4L2/MRGX, MRGBP, YEATS4/GAS41, VPS72/YL1 and EAF6. The NuA4 complex interacts with MYC and the adenovirus E1A protein. RUVBL1 interacts with EP400. Component of a NuA4-related complex which contains EP400, TRRAP/PAF400, SRCAP, BRD8/SMAP, EPC1, DMAP1/DNMAP1, RUVBL1/TIP49, RUVBL2, actin, ACTL6A/BAF53A, VPS72 and YEATS4/GAS41. Component of the BAF53 complex, at least composed of ACTL6A/BAF53A, RUVBL1/TIP49, SMARCA2/BRM, and TRRAP/PAF400. Associates with alpha and gamma tubulins, particularly during metaphase and early anaphase. Interacts with NPAT. Component of the chromatin-remodeling INO80 complex, at least composed of ACTL6A, ACTR5, ACTR8, RVBL1, RVBL2, INO80, INO80B, INO80C, INO80D and INO80E., tissue specificity: Ubiquitously expressed with high expression in heart, skeletal muscle and testis.,

| Validation Data



Western blot analysis of lysates from MCF-7 cells, primary antibody was diluted at 1:1000, 4° over night

Contact information

Orders: order.cn@immunoway.com
Support: support.cn@immunoway.com
Telephone: 400-8787-807(China)
Website: <http://www.immunoway.com.cn>
Address: 2200 Ringwood Ave San Jose, CA 95131 USA



Please scan the QR code
to access additional
product information:
RUVB1 Rabbit pAb

For Research Use Only. Not for Use in Diagnostic Procedures.

[Antibody](#) | [ELISA Kits](#) | [Protein](#) | [Reagents](#)