

## SIDT2 Rabbit pAb

CatalogNo: YT7303

### Key Features

**Host Species**

- Rabbit

**Reactivity**

- Human, Mouse, Rat

**Applications**

- WB, ELISA, IHC

**MW**

- 92kD (Calculated)

**Isotype**

- IgG

### Recommended Dilution Ratios

**WB 1:500-2000****IHC 1:50-300****ELISA 1:2000-20000**

### Storage

**Storage\***

-15°C to -25°C/1 year (Do not lower than -25°C)

**Formulation**

Liquid in PBS containing 50% glycerol, 0.5% BSA and 0.02% sodium azide.

### Basic Information

**Clonality**

Polyclonal

### Immunogen Information

**Immunogen**

Synthesized peptide derived from human SIDT2 AA range: 393-443

**Specificity**

This antibody detects endogenous levels of SIDT2 at Human/Mouse/Rat

### Target Information

**Gene name**

SIDT2 CGI-40 PSEC0072 UNQ685/PRO1325

**Protein Name** SIDT2

Organism	Gene ID	UniProt ID
Human	<a href="#">51092</a> ;	<a href="#">Q8NBJ9</a> ;
Mouse	<a href="#">214597</a> ;	<a href="#">Q8CIF6</a> ;
Rat	<a href="#">315617</a> ;	<a href="#">D3ZEH5</a> ;

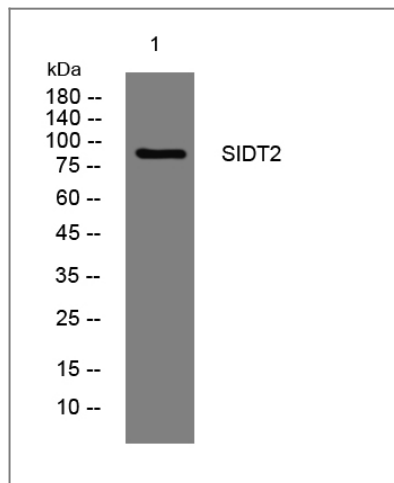
**Cellular Localization**

Lysosome membrane ; Multi-pass membrane protein . Cell membrane . Mainly localizes to lysosomes and only partly to the plasma membrane (PubMed:28277980). Lysosomal localization is required for SIDT2-mediated intracellular degradation of endogenous RNA (By similarity). .

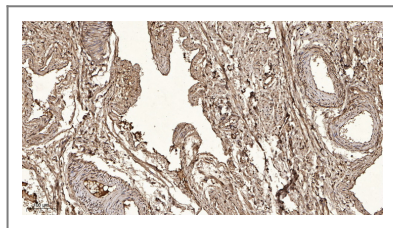
**Function**

similarity:Belongs to the SID1 family.,

## Validation Data



Western blot analysis of lysates from MCF-7 cells, primary antibody was diluted at 1:1000, 4° over night



Immunohistochemical analysis of paraffin-embedded human oophoroma. 1, Antibody was diluted at 1:200(4° overnight). 2, Tris-EDTA,pH9.0 was used for antigen retrieval. 3,Secondary antibody was diluted at 1:200(room temperature, 45min).

## Contact information

Orders: order.cn@immunoway.com  
Support: support.cn@immunoway.com  
Telephone: 400-8787-807(China)  
Website: <http://www.immunoway.com.cn>  
Address: 2200 Ringwood Ave San Jose, CA 95131 USA



Please scan the QR code to access additional product information:  
**SIDT2 Rabbit pAb**

