

## TIDC1 Rabbit pAb

CatalogNo: YT7279

### Key Features

**Host Species**

- Rabbit

**Reactivity**

- Human, Mouse, Rat

**Applications**

- WB, ELISA, IHC

**MW**

- 31kD (Calculated)

**Isotype**

- IgG

### Recommended Dilution Ratios

**WB 1:500-2000****IHC 1:50-300****ELISA 1:2000-20000**

### Storage

**Storage\***

-15°C to -25°C/1 year (Do not lower than -25°C)

**Formulation**

Liquid in PBS containing 50% glycerol, 0.5% BSA and 0.02% sodium azide.

### Basic Information

**Clonality**

Polyclonal

### Immunogen Information

**Immunogen**

Synthesized peptide derived from human TIDC1 AA range: 74-124

**Specificity**

This antibody detects endogenous levels of TIDC1 at Human/Mouse/Rat

### Target Information

**Gene name**

TIMMDC1 C3orf1 UNQ247/PRO284

**Protein Name** TIDC1

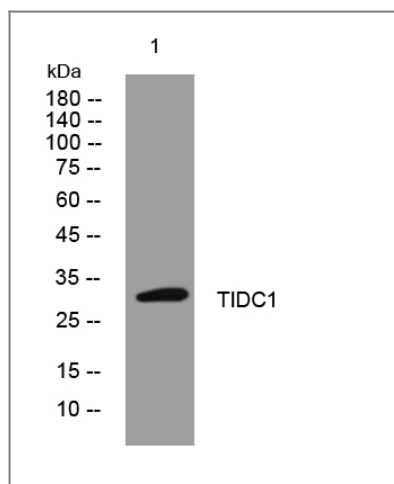
| Organism | Gene ID                 | UniProt ID              |
|----------|-------------------------|-------------------------|
| Human    | <a href="#">51300;</a>  | <a href="#">Q9NPL8;</a> |
| Mouse    | <a href="#">76916;</a>  | <a href="#">Q8BUY5;</a> |
| Rat      | <a href="#">303922;</a> | <a href="#">Q6AY94;</a> |

**Cellular Localization** Mitochondrion membrane ; Multi-pass membrane protein .

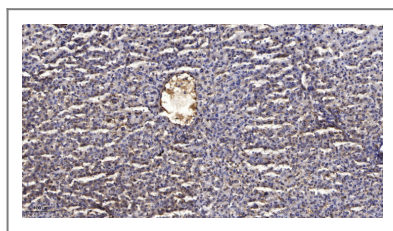
**Tissue specificity** Generalized expression enhanced in heart and skeletal muscle.

**Function** tissue specificity:Generalized expression enhanced in heart and skeletal muscle.,

## Validation Data



Western blot analysis of lysates from VEC cells, primary antibody was diluted at 1:1000, 4° over night



Immunohistochemical analysis of paraffin-embedded human liver cancer. 1, Antibody was diluted at 1:200(4° overnight). 2, Tris-EDTA,pH9.0 was used for antigen retrieval. 3,Secondary antibody was diluted at 1:200(room temperature, 45min).

## Contact information

Orders: order.cn@immunoway.com  
Support: support.cn@immunoway.com  
Telephone: 400-8787-807(China)  
Website: <http://www.immunoway.com.cn>  
Address: 2200 Ringwood Ave San Jose, CA 95131 USA



Please scan the QR code to access additional product information:  
**TIDC1 Rabbit pAb**

