

## AMELY Rabbit pAb

CatalogNo: YT7268

### Key Features

#### Host Species

- Rabbit

#### Reactivity

- Human

#### Applications

- WB

#### MW

- 23kD (Calculated)

#### Isotype

- IgG

### Recommended Dilution Ratios

WB 1:500-2000

### Storage

**Storage\*** -15°C to -25°C/1 year(Do not lower than -25°C)

**Formulation** Liquid in PBS containing 50% glycerol, 0.5% BSA and 0.02% sodium azide.

### Basic Information

**Clonality** Polyclonal

### Immunogen Information

**Immunogen** Synthesized peptide derived from human AMELY.AA range 17-57

**Specificity** This antibody detects endogenous levels of AMELY at Human

### Target Information

**Gene name** AMELY AMGL AMGY

**Protein Name** AMELY

**Organism**

**Gene ID**

**UniProt ID**

Human

[266;](#)

[Q99218;](#)

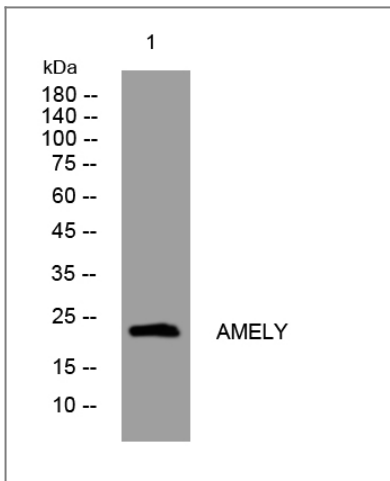
**Cellular  
Localization**

Secreted, extracellular space, extracellular matrix.

**Function**

developmental stage:Transiently but abundantly expressed by ameloblasts during tooth development. Amelogenin is the predominant protein in developing dental enamel.,Function:Plays a role in biomineralization. Seems to regulate the formation of crystallites during the secretory stage of tooth enamel development. Thought to play a major role in the structural organization and mineralization of developing enamel.,miscellaneous:This isoform is encoded on the Y chromosome.,similarity:Belongs to the amelogenin family.,

## Validation Data



Western blot analysis of lysates from HuvEc cells, primary antibody was diluted at 1:1000, 4° over night

## Contact information

Orders: order.cn@immunoway.com  
Support: support.cn@immunoway.com  
Telephone: 400-8787-807(China)  
Website: <http://www.immunoway.com.cn>  
Address: 2200 Ringwood Ave San Jose, CA 95131 USA



Please scan the QR code to access additional product information:  
**AMELY Rabbit pAb**