

TRM13 Rabbit pAb

CatalogNo: YT7248

Key Features

Host Species

- Rabbit

Reactivity

- Human, Mouse

Applications

- WB

MW

- 53kD (Calculated)

Isotype

- IgG

Recommended Dilution Ratios

WB 1:500-2000

Storage

Storage* -15°C to -25°C/1 year (Do not lower than -25°C)

Formulation Liquid in PBS containing 50% glycerol, 0.5% BSA and 0.02% sodium azide.

Basic Information

Clonality Polyclonal

Immunogen Information

Immunogen Synthesized peptide derived from human TRM13 AA range: 331-381

Specificity This antibody detects endogenous levels of TRM13 at Human/Mouse

Target Information

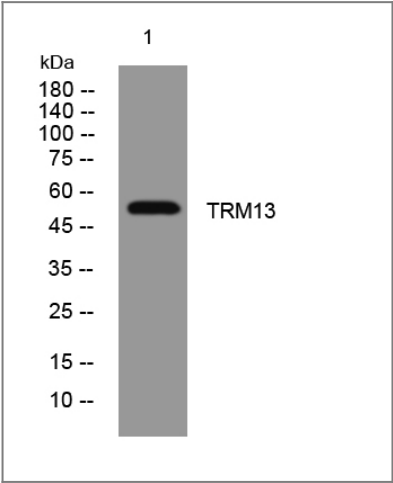
Gene name TRMT13 CCDC76

Protein Name TRM13

Organism	Gene ID	UniProt ID
Human	54482;	Q9NUP7;
Mouse	229780;	Q8BYH3;

Function Catalytic activity:S-adenosyl-L-methionine + rRNA = S-adenosyl-L-homocysteine + rRNA containing 2'-O-methyluridine.,Function:Specifically methylates guanosine-4 in various tRNAs with a Gly(CCG), His or Pro signature.,similarity:Belongs to the TRM13 family.,similarity:Contains 1 CHHC-type zinc finger.,

Validation Data



Western blot analysis of lysates from SH-SY5Y cells, primary antibody was diluted at 1:1000, 4°over night

Contact information

Orders: order.cn@immunoway.com
Support: support.cn@immunoway.com
Telephone: 400-8787-807(China)
Website: http://www.immunoway.com.cn
Address: 2200 Ringwood Ave San Jose, CA 95131 USA



Please scan the QR code to access additional product information:
TRM13 Rabbit pAb