

## RN207 Rabbit pAb

CatalogNo: YT7235

### Key Features

#### Host Species

- Rabbit

#### Reactivity

- Human, Mouse

#### Applications

- WB, ELISA, IHC

#### MW

- 70kD (Calculated)

#### Isotype

- IgG

### Recommended Dilution Ratios

WB 1:500-2000

IHC 1:50-300

ELISA 1:2000-20000

### Storage

#### Storage\*

-15°C to -25°C/1 year (Do not lower than -25°C)

#### Formulation

Liquid in PBS containing 50% glycerol, 0.5% BSA and 0.02% sodium azide.

### Basic Information

#### Clonality

Polyclonal

### Immunogen Information

#### Immunogen

Synthesized peptide derived from human RN207 AA range: 407-457

#### Specificity

This antibody detects endogenous levels of RN207 at Human/Mouse

### Target Information

#### Gene name

RNF207 C1orf188

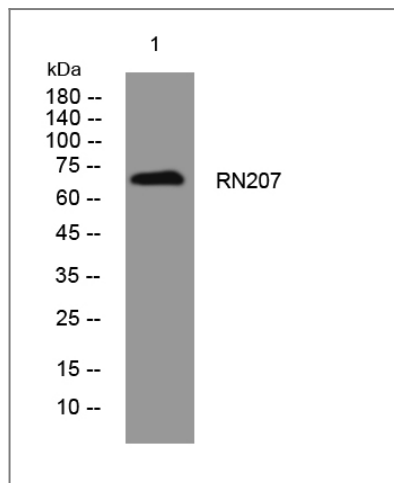
**Protein Name** RN207

Organism	Gene ID	UniProt ID
Human	<a href="#">388591</a> ;	<a href="#">Q6ZRF8</a> ;
Mouse	<a href="#">433809</a> ;	<a href="#">Q3V3A7</a> ;

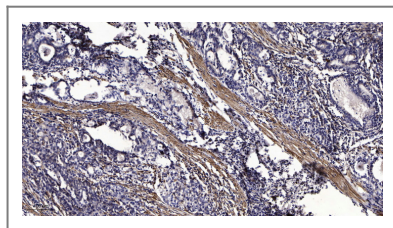
**Cellular Localization** Cytoplasm . Probably located in the endoplasmic reticulum and/or possibly the cis-Golgi apparatus. .

**Function** similarity:Contains 1 B box-type zinc finger.,similarity:Contains 1 RING-type zinc finger.,

## Validation Data



Western blot analysis of lysates from HpeG2 cells, primary antibody was diluted at 1:1000, 4° over night



Immunohistochemical analysis of paraffin-embedded human Gastric adenocarcinoma. 1, Antibody was diluted at 1:200(4° overnight). 2, Tris-EDTA,pH9.0 was used for antigen retrieval. 3,Secondary antibody was diluted at 1:200(room temperature, 45min).

## Contact information

Orders: order.cn@immunoway.com  
Support: support.cn@immunoway.com  
Telephone: 400-8787-807(China)  
Website: <http://www.immunoway.com.cn>  
Address: 2200 Ringwood Ave San Jose, CA 95131 USA



Please scan the QR code to access additional product information:  
**RN207 Rabbit pAb**

