

MPZL2 Rabbit pAb

CatalogNo: YT7231

Key Features

Host Species

- Rabbit

Reactivity

- Human, Mouse

Applications

- WB, IHC

MW

- 24kD (Calculated)

Isotype

- IgG

Recommended Dilution Ratios

WB 1:500-2000

IHC 1:50-300

Storage

Storage*

-15°C to -25°C/1 year (Do not lower than -25°C)

Formulation

Liquid in PBS containing 50% glycerol, 0.5% BSA and 0.02% sodium azide.

Basic Information

Clonality

Polyclonal

Immunogen Information

Immunogen

Synthesized peptide derived from human MPZL2 AA range: 144-194

Specificity

This antibody detects endogenous levels of MPZL2 at Human/Mouse

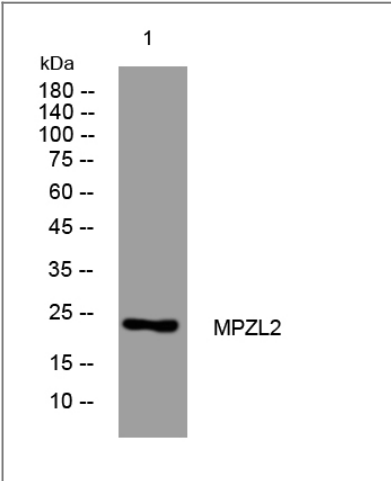
Target Information

Gene name

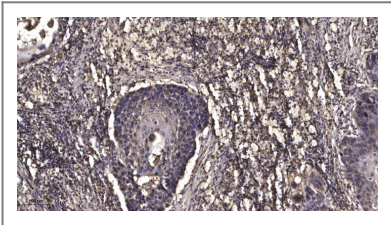
MPZL2 EVA EVA1 UNQ606/PRO1192

Protein Name	MPZL2		
	Organism	Gene ID	UniProt ID
	Human	10205;	O60487;
	Mouse		O70255;
Cellular Localization	Membrane ; Single-pass type I membrane protein .		
Tissue specificity	Widely expressed. In fetal tissues, highest expression in the inner ear. In adult tissues, highest levels in thymus and lung.		
Function	Function:Mediates homophilic cell-cell adhesion.,similarity:Belongs to the myelin P0 protein family.,similarity:Contains 1 Ig-like V-type (immunoglobulin-like) domain.,tissue specificity:Expressed in thymocytes and thymic stromal cells; expression elevated in some T-cell leukemias.,		

| Validation Data



Western blot analysis of lysates from U2OS cells, primary antibody was diluted at 1:1000, 4°over night



Immunohistochemical analysis of paraffin-embedded human Squamous cell carcinoma of lung. 1, Antibody was diluted at 1:200(4° overnight). 2, Tris-EDTA,pH9.0 was used for antigen retrieval. 3,Secondary antibody was diluted at 1:200(room temperature, 45min).

| Contact information

Orders: order.cn@immunoway.com
Support: support.cn@immunoway.com
Telephone: 400-8787-807(China)
Website: <http://www.immunoway.com.cn>
Address: 2200 Ringwood Ave San Jose, CA 95131 USA



Please scan the QR code
to access additional
product information:
MPZL2 Rabbit pAb

For Research Use Only. Not for Use in Diagnostic Procedures.

[Antibody](#) | [ELISA Kits](#) | [Protein](#) | [Reagents](#)