

## PTCD3 Rabbit pAb

CatalogNo: YT7215

### Key Features

#### Host Species

- Rabbit

#### Reactivity

- Human, Mouse

#### Applications

- WB, IHC

#### MW

- 76kD (Calculated)

#### Isotype

- IgG

### Recommended Dilution Ratios

WB 1:500-2000

IHC 1:50-300

### Storage

#### Storage\*

-15°C to -25°C/1 year (Do not lower than -25°C)

#### Formulation

Liquid in PBS containing 50% glycerol, 0.5% BSA and 0.02% sodium azide.

### Basic Information

#### Clonality

Polyclonal

### Immunogen Information

#### Immunogen

Synthesized peptide derived from human PTCD3 AA range: 624-674

#### Specificity

This antibody detects endogenous levels of PTCD3 at Human/Mouse

### Target Information

#### Gene name

PTCD3 TRG15

**Protein Name** PTCD3

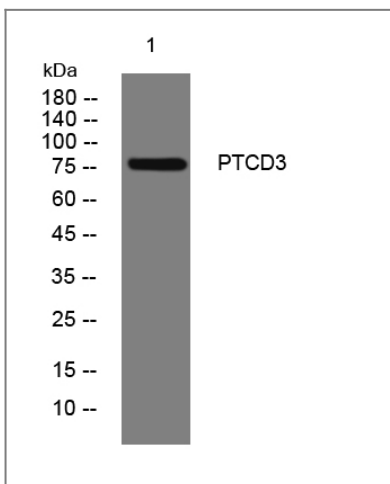
Organism	Gene ID	UniProt ID
Human	<a href="#">55037</a> ;	<a href="#">Q96EY7</a> ;
Mouse	<a href="#">69956</a> ;	<a href="#">Q14C51</a> ;

**Cellular Localization** Mitochondrion .

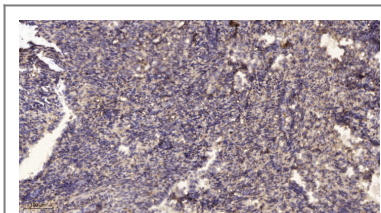
**Tissue specificity** Abundant in testes, skeletal muscle and heart tissue.

**Function** similarity:Belongs to the PTCD3 family.,similarity:Contains 10 PPR (pentatricopeptide) repeats.,

## Validation Data



Western blot analysis of lysates from HpeG2 cells, primary antibody was diluted at 1:1000, 4° over night



Immunohistochemical analysis of paraffin-embedded human uterus. 1, Antibody was diluted at 1:200(4° overnight). 2, Tris-EDTA,pH9.0 was used for antigen retrieval. 3,Secondary antibody was diluted at 1:200(room temperature, 45min).

## Contact information

Orders: order.cn@immunoway.com  
Support: support.cn@immunoway.com  
Telephone: 400-8787-807(China)  
Website: <http://www.immunoway.com.cn>  
Address: 2200 Ringwood Ave San Jose, CA 95131 USA



Please scan the QR code to access additional product information:  
**PTCD3 Rabbit pAb**

