

ERLN2 Rabbit pAb

CatalogNo: YT7212

Key Features

Host Species

- Rabbit

Reactivity

- Human, Mouse, Rat

Applications

- WB

MW

- 37kD (Calculated)

Isotype

- IgG

Recommended Dilution Ratios

WB 1:500-2000

Storage

Storage* -15°C to -25°C/1 year (Do not lower than -25°C)

Formulation Liquid in PBS containing 50% glycerol, 0.5% BSA and 0.02% sodium azide.

Basic Information

Clonality Polyclonal

Immunogen Information

Immunogen Synthesized peptide derived from human ERLN2 AA range: 239-289

Specificity This antibody detects endogenous levels of ERLN2 at Human/Mouse/Rat

Target Information

Gene name ERLIN2 C8orf2 SPFH2 UNQ2441/PRO5003/PRO9924

Protein Name ERLN2

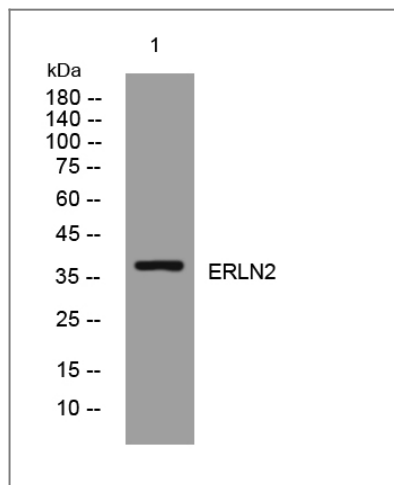
Organism	Gene ID	UniProt ID
Human	11160;	O94905;
Mouse	244373;	Q8BFZ9;
Rat	290823;	B5DEH2;

Cellular Localization Endoplasmic reticulum membrane ; Single-pass type II membrane protein . Associated with lipid raft-like domains of the endoplasmic reticulum membrane.

Tissue specificity Ubiquitous.

Function Function:Plays an important role in the early steps of the endoplasmic reticulum-associated degradation (ERAD) pathway. Involved in ITPR1 degradation by the ERAD pathway.,similarity:Belongs to the band 7/mec-2 family.,subcellular location:Associated with lipid raft-like domains of the endoplasmic reticulum membrane.,subunit:Interacts with activated ITPR1, independently of the degree of ITPR1 polyubiquitination.,tissue specificity:Ubiquitous.,

Validation Data



Western blot analysis of lysates from HeLa cells, primary antibody was diluted at 1:1000, 4° over night

Contact information

Orders: order.cn@immunoway.com
Support: support.cn@immunoway.com
Telephone: 400-8787-807(China)
Website: <http://www.immunoway.com.cn>
Address: 2200 Ringwood Ave San Jose, CA 95131 USA



Please scan the QR code to access additional product information:
ERLN2 Rabbit pAb

