

TR112 Rabbit pAb

CatalogNo: YT7205

Key Features

Host Species

- Rabbit

Reactivity

- Human, Mouse

Applications

- WB

MW

- 14kD (Calculated)

Isotype

- IgG

Recommended Dilution Ratios

WB 1:500-2000

Storage

Storage* -15°C to -25°C/1 year (Do not lower than -25°C)

Formulation Liquid in PBS containing 50% glycerol, 0.5% BSA and 0.02% sodium azide.

Basic Information

Clonality Polyclonal

Immunogen Information

Immunogen Synthesized peptide derived from human TR112 AA range: 65-115

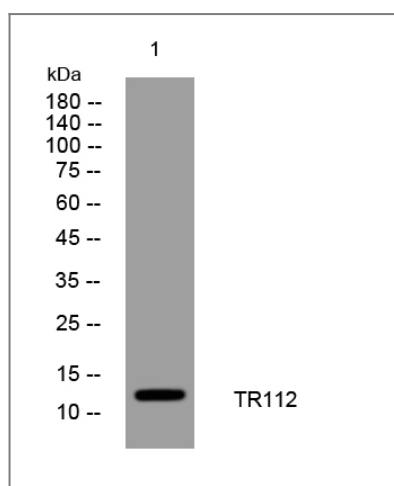
Specificity This antibody detects endogenous levels of TR112 at Human/Mouse

Target Information

Gene name TRMT112 AD-001 HSPC152 HSPC170

Protein Name	TR112		
	Organism	Gene ID	UniProt ID
	Human	51504;	Q9UI30;
	Mouse	67674;	Q9DCG9;
Cellular Localization	Nucleus, nucleoplasm . Cytoplasm, perinuclear region . Localizes to a polarized perinuclear structure, overlapping partially with the Golgi and lysosomes (PubMed:25851604). .		
Function	similarity:Belongs to the TRM112 family.,similarity:Contains 1 TRM112 domain.,		

Validation Data



Western blot analysis of lysates from SW480 cells, primary antibody was diluted at 1:1000, 4°over night

Contact information

Orders: order.cn@immunoway.com
 Support: support.cn@immunoway.com
 Telephone: 400-8787-807(China)
 Website: <http://www.immunoway.com.cn>
 Address: 2200 Ringwood Ave San Jose, CA 95131 USA



Please scan the QR code to access additional product information:
TR112 Rabbit pAb

For Research Use Only. Not for Use in Diagnostic Procedures.

[Antibody](#) | [ELISA Kits](#) | [Protein](#) | [Reagents](#)