

MRAS1 Rabbit pAb

CatalogNo: YT7182

| Key Features

Host Species

- Rabbit

Reactivity

- Human

Applications

- WB

MW

- 17kD (Calculated)

Isotype

- IgG

| Recommended Dilution Ratios

WB 1:500-2000

| Storage

Storage* -15°C to -25°C/1 year(Do not lower than -25°C)

Formulation Liquid in PBS containing 50% glycerol, 0.5% BSA and 0.02% sodium azide.

| Basic Information

Clonality Polyclonal

| Immunogen Information

Immunogen Synthesized peptide derived from human MRAS1 AA range: 42-92

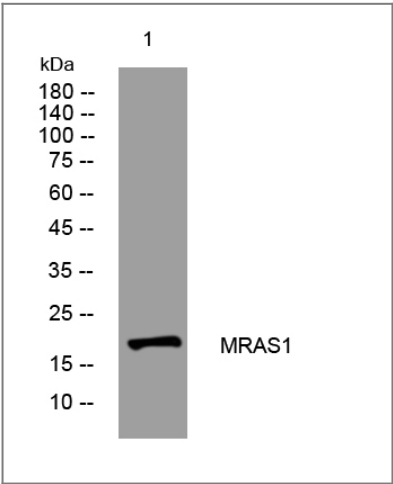
Specificity This antibody detects endogenous levels of MRAS1 at Human

| Target Information

Gene name MRGPRG-AS1 C11orf36 HSD-40 HSD40

Protein Name	MRAS1		
	Organism	Gene ID	UniProt ID
	Human		Q2M3A8 ;

Validation Data



Western blot analysis of lysates from PC-12 cells, primary antibody was diluted at 1:1000, 4°over night

Contact information

Orders: order.cn@immunoway.com
Support: support.cn@immunoway.com
Telephone: 400-8787-807(China)
Website: <http://www.immunoway.com.cn>
Address: 2200 Ringwood Ave San Jose, CA 95131 USA



Please scan the QR code to access additional product information:
MRAS1 Rabbit pAb

For Research Use Only. Not for Use in Diagnostic Procedures.

[Antibody](#) | [ELISA Kits](#) | [Protein](#) | [Reagents](#)