

## TRAD1 Rabbit pAb

CatalogNo: YT7113

### Key Features

**Host Species**

- Rabbit

**Reactivity**

- Human, Mouse, Rat

**Applications**

- WB

**MW**

- 64kD (Calculated)

**Isotype**

- IgG

### Recommended Dilution Ratios

WB 1:500-2000

### Storage

**Storage\***

-15°C to -25°C/1 year (Do not lower than -25°C)

**Formulation**

Liquid in PBS containing 50% glycerol, 0.5% BSA and 0.02% sodium azide.

### Basic Information

**Clonality**

Polyclonal

### Immunogen Information

**Immunogen**

Synthesized peptide derived from human TRAD1 AA range: 52-102

**Specificity**

This antibody detects endogenous levels of TRAD1 at Human/Mouse/Rat

### Target Information

**Gene name**

TRAFD1 FLN29

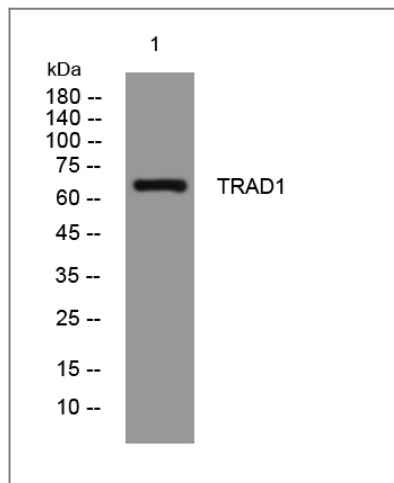
**Protein Name**      TRAD1

Organism	Gene ID	UniProt ID
Human	<a href="#">10906;</a>	<a href="#">O14545;</a>
Mouse	<a href="#">231712;</a>	<a href="#">Q3UDK1;</a>
Rat		<a href="#">Q99MM4;</a>

**Function**

Function:May function as a lipopolysaccharide (LPS)-inducible negative regulator in innate immunity. May be involved in endotoxin tolerance. Seems to act as a negative regulator in toll-like receptor signaling.,induction:LPS, IFNB1 and IFNG increased protein levels in RAW cells with IFNB1 being most potent inducer. IL4 and IL10 did not induced the expression in RAW cells, moreover, LPS did not induce expression in the presence of IL4 or IL10.,similarity:Contains 1 TRAF-type zinc finger.,subunit:Interacts with TRAF6.,

## Validation Data



Western blot analysis of lysates from A431 cells, primary antibody was diluted at 1:1000, 4°over night

## Contact information

Orders:            order.cn@immunoway.com  
Support:          support.cn@immunoway.com  
Telephone:       400-8787-807(China)  
Website:          http://www.immunoway.com.cn  
Address:          2200 Ringwood Ave San Jose, CA 95131 USA



Please scan the QR code to access additional product information:  
**TRAD1 Rabbit pAb**