

KBP Rabbit pAb

CatalogNo: YT7104

Key Features

Host Species

- Rabbit

Reactivity

- Human, Mouse, Rat

Applications

- WB, IHC

MW

- 68kD (Calculated)

Isotype

- IgG

Storage

Storage* -15°C to -25°C/1 year (Do not lower than -25°C)

Formulation Liquid in PBS containing 50% glycerol, 0.5% BSA and 0.02% sodium azide.

Recommended Dilution Ratios

WB 1:500-2000

IHC 1:50-300

Basic Information

Clonality Polyclonal

Immunogen Information

Immunogen Synthesized peptide derived from human KBP AA range: 542-592

Specificity This antibody detects endogenous levels of KBP at Human/Mouse/Rat

Target Information

Gene name KIAA1279 KBP

Protein Name KBP

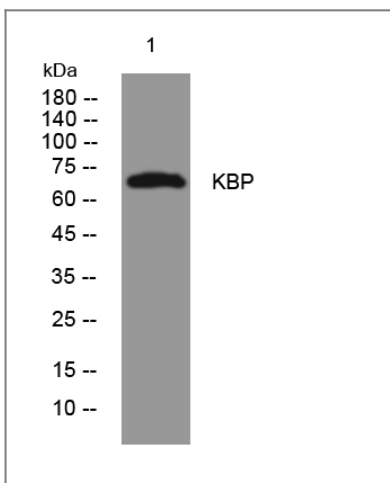
Organism	Gene ID	UniProt ID
Human	26128;	Q96EK5;
Mouse	72320;	Q6ZPU9;
Rat	606294;	Q4G074;

Cellular Localization Cytoplasm, cytoskeleton .

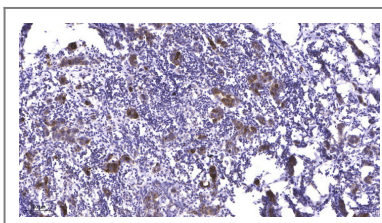
Tissue specificity Highly expressed in heart, brain, ovary, testis, spinal cord and all specific brain regions examined. Moderate expressed at intermediate level in all other adult tissues examined, as well as in fetal liver and brain. Not expressed in blood leukocytes.

Function Disease:Defects in KIAA1279 are the cause of Goldberg-Shprintzen megacolon syndrome (GOSHS) [MIM:609460]. GOSHS is characterized by microcephaly, mental retardation and facial dysmorphism, as well as phenotypes related to Hirschsprung disease syndrome.,Function:Required for organization of axonal microtubules, and axonal outgrowth and maintenance during peripheral and central nervous system development. Regulates mitochondrial transport by modulating KIF1B motor activity.,similarity:Belongs to the KIF1-binding protein family.,subunit:Interacts with KIF1B.,tissue specificity:Highly expressed in heart, brain, ovary, testis, spinal cord and all specific brain regions examined. Moderate expressed at intermediate level in all other adult tissues examined, as well as in fetal liver and brain. Not expressed in blood leukocytes.,

Validation Data



Western blot analysis of lysates from Jurkat cells, primary antibody was diluted at 1:1000, 4° over night



Immunohistochemical analysis of paraffin-embedded human Breast cancer. 1, Antibody was diluted at 1:200(4° overnight). 2, Tris-EDTA,pH9.0 was used for antigen retrieval. 3,Secondary antibody was diluted at 1:200(room temperature, 45min).

| Contact information

Orders: order.cn@immunoway.com
Support: support.cn@immunoway.com
Telephone: 400-8787-807(China)
Website: <http://www.immunoway.com.cn>
Address: 2200 Ringwood Ave San Jose, CA 95131 USA



Please scan the QR code
to access additional
product information:
KBP Rabbit pAb

For Research Use Only. Not for Use in Diagnostic Procedures.

[Antibody](#) | [ELISA Kits](#) | [Protein](#) | [Reagents](#)