

## DLGP2 Rabbit pAb

CatalogNo: YT7053

### | Key Features

#### Host Species

- Rabbit

#### Reactivity

- Human, Mouse, Rat

#### Applications

- WB

#### MW

- 116kD (Calculated)

#### Isotype

- IgG

### | Recommended Dilution Ratios

WB 1:500-2000

### | Storage

**Storage\*** -15°C to -25°C/1 year (Do not lower than -25°C)

**Formulation** Liquid in PBS containing 50% glycerol, 0.5% BSA and 0.02% sodium azide.

### | Basic Information

**Clonality** Polyclonal

### | Immunogen Information

**Immunogen** Synthesized peptide derived from human DLGP2 AA range: 727-777

**Specificity** This antibody detects endogenous levels of DLGP2 at Human/Mouse/Rat

### | Target Information

**Gene name** DLGAP2 DAP2

**Protein Name** DLGP2

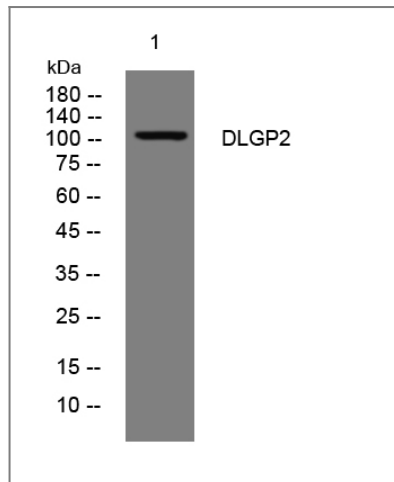
Organism	Gene ID	UniProt ID
Human	<a href="#">9228;</a>	<a href="#">Q9P1A6;</a>
Mouse	<a href="#">244310;</a>	<a href="#">Q8BJ42;</a>
Rat	<a href="#">116681;</a>	<a href="#">P97837;</a>

**Cellular Localization** Cell membrane ; Peripheral membrane protein . Cell junction, synapse, postsynaptic density . Cell junction, synapse . Postsynaptic density of neuronal cells. .

**Tissue specificity** Expressed in brain and kidney.

**Function** Function:May play a role in the molecular organization of synapses and neuronal cell signaling. Could be an adapter protein linking ion channel to the subsynaptic cytoskeleton. May induce enrichment of PSD-95/SAP90 at the plasma membrane.,similarity:Belongs to the SAPAP family.,subcellular location:Postsynaptic density of neuronal cells.,subunit:Interacts with DLG1 and DLG4/PSD-95.,tissue specificity:Expressed in brain and kidney.,

## Validation Data



Western blot analysis of lysates from PC-12 cells, primary antibody was diluted at 1:1000, 4° over night

## Contact information

Orders: order.cn@immunoway.com  
Support: support.cn@immunoway.com  
Telephone: 400-8787-807(China)  
Website: <http://www.immunoway.com.cn>  
Address: 2200 Ringwood Ave San Jose, CA 95131 USA



Please scan the QR code to access additional product information:  
**DLGP2 Rabbit pAb**

