

M4A10 Rabbit pAb

CatalogNo: YT7004

Key Features

Host Species

- Rabbit

Reactivity

- Human, Mouse

Applications

- WB

MW

- 29kD (Calculated)

Isotype

- IgG

Storage

Storage* -15°C to -25°C/1 year (Do not lower than -25°C)

Formulation Liquid in PBS containing 50% glycerol, 0.5% BSA and 0.02% sodium azide.

Recommended Dilution Ratios

WB 1:500-2000

Basic Information

Clonality Polyclonal

Immunogen Information

Immunogen Synthesized peptide derived from human M4A10 AA range: 6-56

Specificity This antibody detects endogenous levels of M4A10 at Human/Mouse

Target Information

Gene name MS4A10 CD20L7 MS4A9

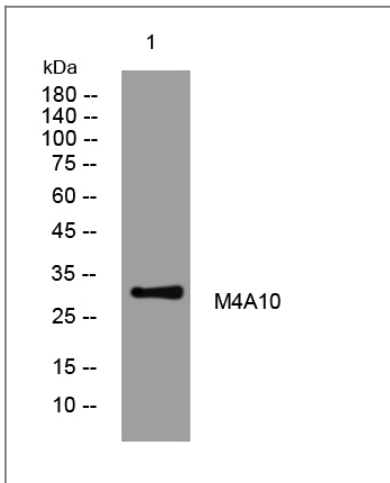
Protein Name M4A10

Organism	Gene ID	UniProt ID
Human	341116 ;	Q96PG2 ;
Mouse	69826 ;	Q99N03 ;

Cellular Localization Membrane ; Multi-pass membrane protein .

Function Function:May be involved in signal transduction as a component of a multimeric receptor complex.,similarity:Belongs to the MS4A family.,

Validation Data



Western blot analysis of lysates from HeLa cells, primary antibody was diluted at 1:1000, 4°over night

Contact information

Orders: order.cn@immunoway.com
Support: support.cn@immunoway.com
Telephone: 400-8787-807(China)
Website: <http://www.immunoway.com.cn>
Address: 2200 Ringwood Ave San Jose, CA 95131 USA



Please scan the QR code to access additional product information:
M4A10 Rabbit pAb

For Research Use Only. Not for Use in Diagnostic Procedures.

[Antibody](#) | [ELISA Kits](#) | [Protein](#) | [Reagents](#)