

RPIA Rabbit pAb

CatalogNo: YT6982

Key Features

Host Species

- Rabbit

Reactivity

- Human, Mouse

Applications

- WB

MW

- 34kD (Calculated)

Isotype

- IgG

Recommended Dilution Ratios

WB 1:500-2000

Storage

Storage* -15°C to -25°C/1 year (Do not lower than -25°C)

Formulation Liquid in PBS containing 50% glycerol, 0.5% BSA and 0.02% sodium azide.

Basic Information

Clonality Polyclonal

Immunogen Information

Immunogen Synthesized peptide derived from human RPIA AA range: 256-306

Specificity This antibody detects endogenous levels of RPIA at Human/Mouse

Target Information

Gene name RPIA RPI

Protein Name

RPIA

Organism**Gene ID****UniProt ID**

Human

[22934;](#)[P49247;](#)

Mouse

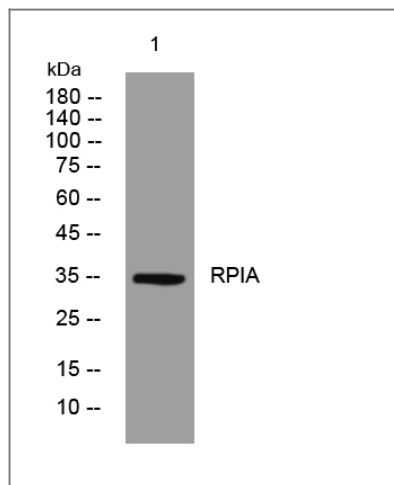
[19895;](#)[P47968;](#)**Cellular
Localization**

cytosol,integral component of membrane,intracellular membrane-bounded organelle,

Function

Catalytic activity:D-ribose 5-phosphate = D-ribulose 5-phosphate.,Disease:Defects in RPIA are the cause of ribose 5-phosphate isomerase deficiency [MIM:608611]. A patient has been described with a deficiency of ribose 5-phosphate isomerase who presented with leukoencephalopathy and peripheral neuropathy. Proton magnetic resonance spectroscopy of the brain revealed a highly elevated level of the polyols ribitol and D-arabitol, which were subsequently also found in high concentrations in body fluids. Deficient activity of RPIA, one of the pentose phosphate pathway enzymes, has been demonstrated in fibroblasts.,pathway:Carbohydrate degradation; pentose phosphate pathway; D-ribose 5-phosphate from D-ribulose 5-phosphate (non-oxidative stage): step 1/1.,similarity:Belongs to the ribose 5-phosphate isomerase family.,

Validation Data



Western blot analysis of lysates from HuvEc cells, primary antibody was diluted at 1:1000, 4° over night

Contact information

Orders: order.cn@immunoway.com
Support: support.cn@immunoway.com
Telephone: 400-8787-807(China)
Website: <http://www.immunoway.com.cn>
Address: 2200 Ringwood Ave San Jose, CA 95131 USA



Please scan the QR code to access additional product information:
RPIA Rabbit pAb

