

CRBB1 Rabbit pAb

CatalogNo: YT6960

| Key Features

Host Species

- Rabbit

Reactivity

- Human, Mouse, Rat

Applications

- WB

MW

- 28kD (Calculated)

Isotype

- IgG

| Recommended Dilution Ratios

WB 1:500-2000

| Storage

Storage*

-15°C to -25°C/1 year (Do not lower than -25°C)

Formulation

Liquid in PBS containing 50% glycerol, 0.5% BSA and 0.02% sodium azide.

| Basic Information

Clonality

Polyclonal

| Immunogen Information

Immunogen

Synthesized peptide derived from human CRBB1 AA range: 81-131

Specificity

This antibody detects endogenous levels of CRBB1 at Human/Mouse/Rat

| Target Information

Gene name

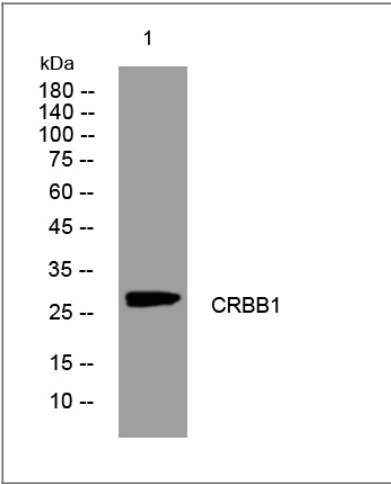
CRYBB1

Protein Name CRBB1

Organism	Gene ID	UniProt ID
Human	1414;	P53674;
Mouse	12960;	Q9WVJ5;
Rat	25421;	P02523;

Function Disease:Defects in CRYBB1 are the cause of autosomal recessive congenital nuclear cataract type 3 (CATCN3) [MIM:611544]. CATCN3 is a form of non-syndromic congenital cataract. Non-syndromic congenital cataracts vary markedly in severity and morphology, affecting the nuclear, cortical, polar, or subcapsular parts of the lens or, in severe cases, the entire lens, with a variety of types of opacity. They are one of the major causes of vision loss in children worldwide and are responsible for approximately one third of blindness in infants. Congenital cataracts can lead to permanent blindness by interfering with the sharp focus of light on the retina during critical developmental intervals.,Domain:Has a two-domain beta-structure, folded into four very similar Greek key motifs.,Function:Crystallins are the dominant structural components of the vertebrate eye lens.,mass spectrometry: PubMed:8626774,PTM:Specific cleavages in the N-terminal arm occur during lens maturation and give rise to truncated forms, leading to impaired oligomerization and protein insolubilization.,similarity:Belongs to the beta/gamma-crystallin family.,similarity:Contains 4 beta/gamma crystallin 'Greek key' domains.,subunit:Homo/heterodimer, or complexes of higher order. The structure of beta-crystallin oligomers seems to be stabilized through interactions between the N-terminal arms.,

Validation Data



Western blot analysis of lysates from HCT116 cells, primary antibody was diluted at 1:1000, 4°over night

Contact information

Orders: order.cn@immunoway.com
Support: support.cn@immunoway.com
Telephone: 400-8787-807(China)
Website: <http://www.immunoway.com.cn>
Address: 2200 Ringwood Ave San Jose, CA 95131 USA



Please scan the QR code
to access additional
product information:
CRBB1 Rabbit pAb

For Research Use Only. Not for Use in Diagnostic Procedures.

[Antibody](#) | [ELISA Kits](#) | [Protein](#) | [Reagents](#)