

SYFA Rabbit pAb

CatalogNo: YT6948

Key Features

Host Species

- Rabbit

Reactivity

- Human, Mouse, Rat

Applications

- WB, ELISA, IHC

MW

- 56kD (Calculated)

Isotype

- IgG

Storage

Storage* -15°C to -25°C/1 year (Do not lower than -25°C)

Formulation Liquid in PBS containing 50% glycerol, 0.5% BSA and 0.02% sodium azide.

Recommended Dilution Ratios

WB 1:500-2000

IHC 1:50-300

ELISA 1:2000-20000

Basic Information

Clonality Polyclonal

Immunogen Information

Immunogen Synthesized peptide derived from human SYFA AA range: 331-381

Specificity This antibody detects endogenous levels of SYFA at Human/Mouse/Rat

Target Information

Gene name FARSA FARS FARSL FARSLA

Protein Name

SYFA

Organism	Gene ID	UniProt ID
Human	2193 ;	Q9Y285 ;
Mouse	66590 ;	Q8C0C7 ;
Rat	288917 ;	Q505J8 ;

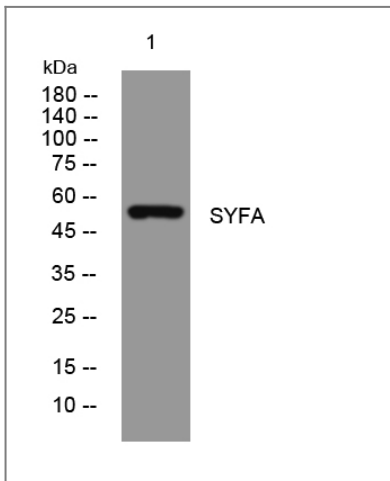
Cellular Localization

Cytoplasm .

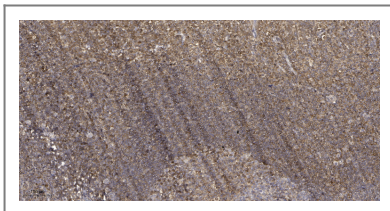
Function

Catalytic activity:ATP + L-phenylalanine + tRNA(Phe) = AMP + diphosphate + L-phenylalanyl-tRNA(Phe).,similarity:Belongs to the class-II aminoacyl-tRNA synthetase family.,similarity:Belongs to the class-II aminoacyl-tRNA synthetase family. Phe-tRNA synthetase alpha chain type 2 subfamily.,subunit:Tetramer of two alpha and two beta chains.,

| Validation Data



Western blot analysis of lysates from CACO2 cells, primary antibody was diluted at 1:1000, 4° over night



Immunohistochemical analysis of paraffin-embedded human tonsil. 1, Antibody was diluted at 1:200(4° overnight). 2, Tris-EDTA,pH9.0 was used for antigen retrieval. 3,Secondary antibody was diluted at 1:200(room temperature, 45min).

| Contact information

Orders: order.cn@immunoway.com
Support: support.cn@immunoway.com
Telephone: 400-8787-807(China)
Website: <http://www.immunoway.com.cn>
Address: 2200 Ringwood Ave San Jose, CA 95131 USA



Please scan the QR code
to access additional
product information:
SYFA Rabbit pAb

For Research Use Only. Not for Use in Diagnostic Procedures.

[Antibody](#) | [ELISA Kits](#) | [Protein](#) | [Reagents](#)