

SC22C Rabbit pAb

CatalogNo: YT6946

Key Features

Host Species

- Rabbit

Reactivity

- Human, Mouse

Applications

- WB, IF, ELISA, IHC

MW

- 33kD (Calculated)

Isotype

- IgG

Recommended Dilution Ratios

WB 1:500-2000**IF/ICC 1:50-200****ELISA 1:2000-20000****IHC 1:50-200**

Storage

Storage*

-15°C to -25°C/1 year (Do not lower than -25°C)

Formulation

Liquid in PBS containing 50% glycerol, 0.5% BSA and 0.02% sodium azide.

Basic Information

Clonality

Polyclonal

Immunogen Information

Immunogen

Synthesized peptide derived from human SC22C AA range: 130-180

Specificity

This antibody detects endogenous levels of SC22C at Human/Mouse

Target Information

Gene name SEC22C SEC22L3 UNQ459/PRO784

Protein Name SC22C

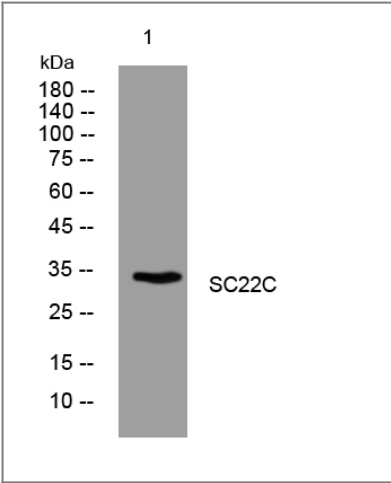
Organism	Gene ID	UniProt ID
Human	9117 ;	Q9BRL7 ;
Mouse	215474 ;	Q8BXT9 ;

Cellular Localization Endoplasmic reticulum membrane ; Multi-pass membrane protein .

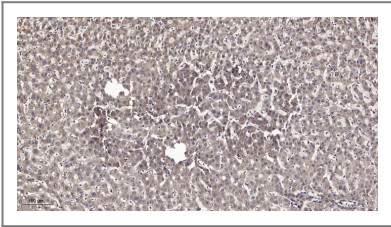
Tissue specificity Ubiquitously expressed.

Function Function:May be involved in vesicle transport between the ER and the Golgi complex.,similarity:Belongs to the synaptobrevin family.,similarity:Contains 1 longin domain.,tissue specificity:Ubiquitously expressed.,

Validation Data



Western blot analysis of lysates from MDA-MB cells, primary antibody was diluted at 1:1000, 4°over night



Immunohistochemical analysis of paraffin-embedded human liver cancer. 1, Antibody was diluted at 1:200(4° overnight). 2, Tris-EDTA,pH9.0 was used for antigen retrieval. 3,Secondary antibody was diluted at 1:200(room temperature, 45min).

Contact information

Orders: order.cn@immunoway.com
Support: support.cn@immunoway.com
Telephone: 400-8787-807(China)
Website: <http://www.immunoway.com.cn>
Address: 2200 Ringwood Ave San Jose, CA 95131 USA



Please scan the QR code
to access additional
product information:
SC22C Rabbit pAb

For Research Use Only. Not for Use in Diagnostic Procedures.

[Antibody](#) | [ELISA Kits](#) | [Protein](#) | [Reagents](#)