

T2FA Rabbit pAb

CatalogNo: YT6890

| Key Features

Host Species

- Rabbit

Reactivity

- Human, Mouse, Rat

Applications

- WB

MW

- 57kD (Calculated)

Isotype

- IgG

| Recommended Dilution Ratios

WB 1:500-2000

| Storage

Storage* -15°C to -25°C/1 year (Do not lower than -25°C)

Formulation Liquid in PBS containing 50% glycerol, 0.5% BSA and 0.02% sodium azide.

| Basic Information

Clonality Polyclonal

| Immunogen Information

Immunogen Synthesized peptide derived from human T2FA AA range: 462-512

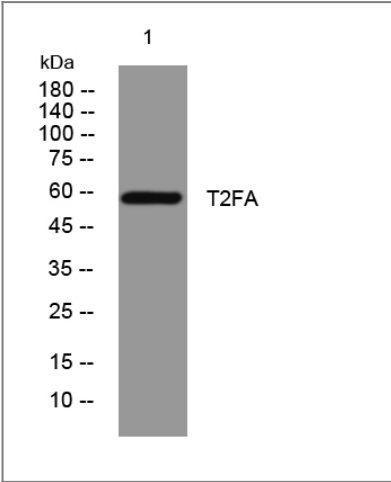
Specificity This antibody detects endogenous levels of T2FA at Human/Mouse/Rat

| Target Information

Gene name GTF2F1 RAP74

Protein Name	T2FA		
	Organism	Gene ID	UniProt ID
	Human	2962;	P35269;
	Mouse	98053;	Q3THK3;
	Rat	316123;	Q6AY96;
Cellular Localization	Nucleus.		
Function	Caution:Was reported (PubMed:10428810) to have a protein kinase activity and to autophosphorylates on Ser-385 and Thr-389.,Function:TFIIF is a general transcription initiation factor that binds to RNA polymerase II and helps to recruit it to the initiation complex in collaboration with TFIIB. It promotes transcription elongation.,PTM:Phosphorylated on Ser and other residues by TAF1 and casein kinase II-like kinases.,similarity:Belongs to the TFIIF alpha subunit family.,subunit:Heterodimer of an alpha and a beta subunit. Interacts with GTF2F2 and CTDPI. Interacts with TAF6/TAFII80.,		

Validation Data



Western blot analysis of lysates from HpeG2 cells, primary antibody was diluted at 1:1000, 4°over night

Contact information

Orders: order.cn@immunoway.com
 Support: support.cn@immunoway.com
 Telephone: 400-8787-807(China)
 Website: http://www.immunoway.com.cn
 Address: 2200 Ringwood Ave San Jose, CA 95131 USA



Please scan the QR code
 to access additional
 product information:
T2FA Rabbit pAb

