

NOVA2 Rabbit pAb

CatalogNo: YT6879

Key Features

Host Species

- Rabbit

Reactivity

- Human, Mouse

Applications

- WB

MW

- 54kD (Calculated)

Isotype

- IgG

Storage

Storage* -15°C to -25°C/1 year (Do not lower than -25°C)

Formulation Liquid in PBS containing 50% glycerol, 0.5% BSA and 0.02% sodium azide.

Recommended Dilution Ratios

WB 1:500-2000

Basic Information

Clonality Polyclonal

Immunogen Information

Immunogen Synthesized peptide derived from human NOVA2 AA range: 274-324

Specificity This antibody detects endogenous levels of NOVA2 at Human

Target Information

Gene name NOVA2 ANOVA NOVA3

Protein Name NOVA2

Organism

Human

Gene ID

[4858;](#)

UniProt ID

[Q9UNW9;](#)

Cellular Localization

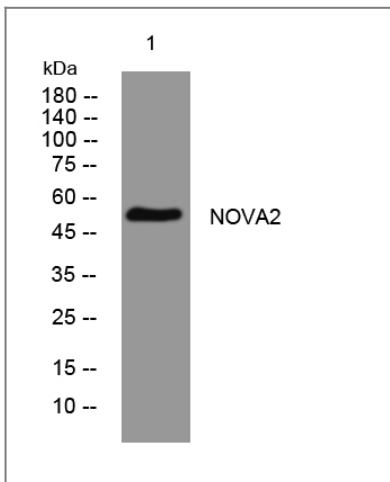
Nucleus .

Tissue specificity Brain. Expression restricted to astrocytes.

Function

Disease:Autoantigen in the paraneoplastic opsoclonus myoclonus ataxia (POMA) , a paraneoplastic neurological syndrome/disorder (PNS/D) associated with breast cancer , fallopian cancer , and SCLCa and characterized primarily by loss of inhibitory control of motor neurons in the spinal cord and brainstem. Recognized by the IgG autoantibody ANNA-2 (also called anti-Ri) . ,Domain:The third KH domain (KH3) recognizes specifically 5'-UCAAY-3' . ,Function:May regulate RNA splicing or metabolism in a specific subset of developing neurons (By similarity) . Binds single strand RNA. ,similarity:Contains 3 KH domains. ,subunit:Interacts with PTBP2. ,tissue specificity:Brain. Expression restricted to astrocytes. ,

Validation Data



Western blot analysis of lysates from HeLa cells, primary antibody was diluted at 1:1000, 4°C over night

Contact information

Orders: order.cn@immunoway.com
Support: support.cn@immunoway.com
Telephone: 400-8787-807(China)
Website: <http://www.immunoway.com.cn>
Address: 2200 Ringwood Ave San Jose, CA 95131 USA



Please scan the QR code to access additional product information:
NOVA2 Rabbit pAb

