

PIGO Rabbit pAb

CatalogNo: YT6874

Key Features

Host Species

- Rabbit

Reactivity

- Human, Mouse

Applications

- WB, IHC

MW

- 120kD (Calculated)

Isotype

- IgG

Storage

Storage* -15°C to -25°C/1 year (Do not lower than -25°C)

Formulation Liquid in PBS containing 50% glycerol, 0.5% BSA and 0.02% sodium azide.

Recommended Dilution Ratios

WB 1:500-2000

IHC 1:50-300

Basic Information

Clonality Polyclonal

Immunogen Information

Immunogen Synthesized peptide derived from human PIGO AA range: 950-1000

Specificity This antibody detects endogenous levels of PIGO at Human/Mouse

Target Information

Gene name PIGO UNQ632/PRO1249

Protein Name PIGO

Organism	Gene ID	UniProt ID
Human	84720 ;	Q8TEQ8 ;
Mouse		Q9JJI6 ;

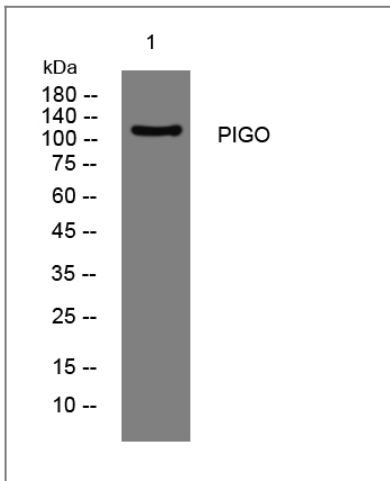
Cellular Localization

Endoplasmic reticulum membrane ; Multi-pass membrane protein .

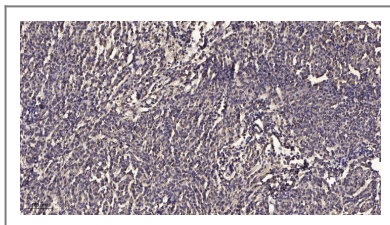
Function

Alternative products:Additional isoforms seem to exist ,Function:Ethanolamine phosphate transferase involved in glycosylphosphatidylinositol-anchor biosynthesis. Transfers ethanolamine phosphate to the GPI third mannose which links the GPI-anchor to the C-terminus of the proteins by an amide bond. ,pathway:Glycolipid biosynthesis; glycosylphosphatidylinositol-anchor biosynthesis. ,similarity:Belongs to the PIGG/PIGN/PIGO family. PIGO subfamily. ,subunit:Forms a complex with PIGF. PIGF is required to stabilize PIGO. ,

Validation Data



Western blot analysis of lysates from MCF-7 cells, primary antibody was diluted at 1:1000, 4°C over night



Immunohistochemical analysis of paraffin-embedded human meningioma. 1, Antibody was diluted at 1:200 (4°C overnight). 2, Tris-EDTA,pH9.0 was used for antigen retrieval. 3,Secondary antibody was diluted at 1:200 (room temperature, 45min).

Contact information

Orders: order.cn@immunoway.com
Support: support.cn@immunoway.com
Telephone: 400-8787-807(China)
Website: <http://www.immunoway.com.cn>
Address: 2200 Ringwood Ave San Jose, CA 95131 USA



Please scan the QR code
to access additional
product information:
PIGO Rabbit pAb

For Research Use Only. Not for Use in Diagnostic Procedures.

[Antibody](#) | [ELISA Kits](#) | [Protein](#) | [Reagents](#)