

## BEX2 Rabbit pAb

CatalogNo: YT6847

Orthogonal Validated 

### Key Features

#### Host Species

- Rabbit

#### Reactivity

- Human, Mouse, Rat

#### Applications

- WB

#### MW

- 14kD (Calculated)

#### Isotype

- IgG

### Recommended Dilution Ratios

**WB 1:500-2000**

### Storage

**Storage\***

-15°C to -25°C/1 year (Do not lower than -25°C)

**Formulation**

Liquid in PBS containing 50% glycerol, 0.5% BSA and 0.02% sodium azide.

### Basic Information

**Clonality**

Polyclonal

### Immunogen Information

**Immunogen**

Synthesized peptide derived from human BEX2 AA range: 28-78

**Specificity**

This antibody detects endogenous levels of BEX2 at Human/Mouse/Rat

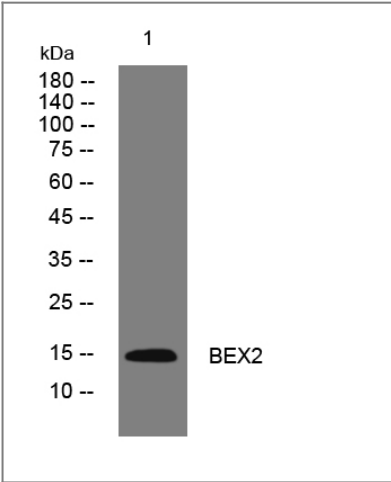
### Target Information

**Gene name**

BEX2

<b>Protein Name</b>	BEX2		
	<b>Organism</b>	<b>Gene ID</b>	<b>UniProt ID</b>
	Human	<a href="#">84707;</a>	<a href="#">Q9BXY8;</a>
	Mouse	<a href="#">12069;</a>	<a href="#">Q9WTZ8;</a>
	Rat	<a href="#">363498;</a>	<a href="#">Q3MKQ1;</a>
<b>Cellular Localization</b>	Cytoplasm . Nucleus .		
<b>Tissue specificity</b>	Expressed in central nervous system, with high level in pituitary, cerebellum and temporal lobe. Widely expressed in breast cancer cell lines.		
<b>Function</b>	Caution:Was named BEX1 by some authors.,similarity:Belongs to the BEX family.,subunit:Interacts with OMP (By similarity). Interacts with LMO2, possibly leading to regulate the transcriptional activity of a DNA-binding complex containing LMO2.,tissue specificity:Expressed in central nervous system, with high level in pituitary, cerebellum and temporal lobe.,		

| Validation Data



Western blot analysis of lysates from HpeG2 cells, primary antibody was diluted at 1:1000, 4°over night

| Contact information

Orders: order.cn@immunoway.com  
Support: support.cn@immunoway.com  
Telephone: 400-8787-807(China)  
Website: http://www.immunoway.com.cn  
Address: 2200 Ringwood Ave San Jose, CA 95131 USA



Please scan the QR code to access additional product information:  
**BEX2 Rabbit pAb**

