

FACR1 Rabbit pAb

CatalogNo: YT6820

| Key Features

Host Species

- Rabbit

Reactivity

- Human, Mouse, Rat

Applications

- WB

MW

- 57kD (Calculated)

Isotype

- IgG

| Recommended Dilution Ratios

WB 1:500-2000

| Storage

Storage* -15°C to -25°C/1 year (Do not lower than -25°C)

Formulation Liquid in PBS containing 50% glycerol, 0.5% BSA and 0.02% sodium azide.

| Basic Information

Clonality Polyclonal

| Immunogen Information

Immunogen Synthesized peptide derived from human FACR1 AA range: 135-185

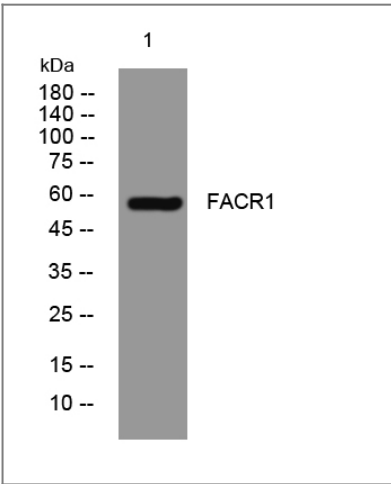
Specificity This antibody detects endogenous levels of FACR1 at Human/Mouse/Rat

| Target Information

Gene name FAR1 MLSTD2 UNQ2423/PRO4981

Protein Name	FACR1		
	Organism	Gene ID	UniProt ID
	Human	84188;	Q8WVX9;
	Mouse	67420;	Q922J9;
	Rat	293173;	Q66H50;
Cellular Localization	Peroxisome membrane ; Single-pass membrane protein .		
Function	Catalytic activity:Fatty acyl-CoA + 2 NADPH = fatty alcohol + 2 NADP(+).,Function:Catalyzes the reduction of saturated fatty acyl-CoA with chain length C16 or C18 to fatty alcohols.,similarity:Belongs to the fatty acyl-CoA reductase family.,		

Validation Data



Western blot analysis of lysates from Hela cells, primary antibody was diluted at 1:1000, 4°over night

Contact information

Orders: order.cn@immunoway.com
Support: support.cn@immunoway.com
Telephone: 400-8787-807(China)
Website: http://www.immunoway.com.cn
Address: 2200 Ringwood Ave San Jose, CA 95131 USA



Please scan the QR code to access additional product information:
FACR1 Rabbit pAb