

## SPRE2 Rabbit pAb

CatalogNo: YT6816

### Key Features

#### Host Species

- Rabbit

#### Reactivity

- Human, Mouse, Rat

#### Applications

- WB, IHC

#### MW

- 46kD (Calculated)

#### Isotype

- IgG

### Recommended Dilution Ratios

WB 1:500-2000

IHC 1:50-300

### Storage

#### Storage\*

-15°C to -25°C/1 year (Do not lower than -25°C)

#### Formulation

Liquid in PBS containing 50% glycerol, 0.5% BSA and 0.02% sodium azide.

### Basic Information

#### Clonality

Polyclonal

### Immunogen Information

#### Immunogen

Synthesized peptide derived from human SPRE2 AA range: 68-118

#### Specificity

This antibody detects endogenous levels of SPRE2 at Human/Mouse/Rat

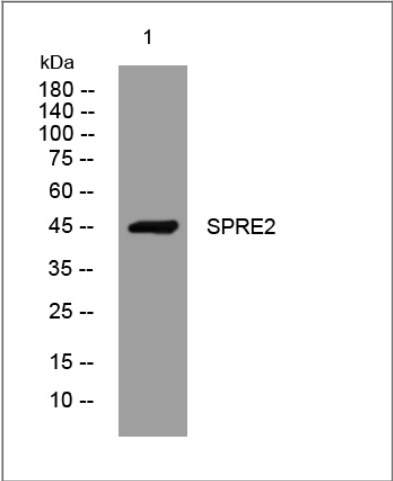
### Target Information

#### Gene name

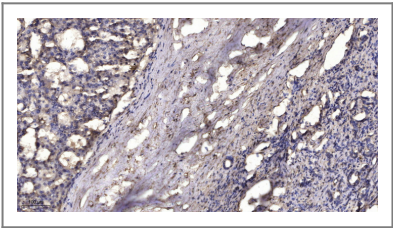
SPRED2

Protein Name	SPRE2		
	Organism	Gene ID	UniProt ID
	Human	<a href="#">200734</a> ;	<a href="#">Q7Z698</a> ;
	Mouse	<a href="#">114716</a> ;	<a href="#">Q924S7</a> ;
	Rat	<a href="#">305539</a> ;	<a href="#">Q3C2P8</a> ;
Cellular Localization	Cell membrane ; Peripheral membrane protein ; Cytoplasmic side . Cytoplasmic vesicle, secretory vesicle membrane ; Peripheral membrane protein ; Cytoplasmic side . Cytoplasm . Detected in the cytoplasm of the stratum spinosum cells, where it is associated with cytoplasmic vesicles that are supposed to be secretory granules. .		
Tissue specificity	Expressed in liver, skin, small intestine, salivary gland and prostate.		
Function	Function:Tyrosine kinase substrate that inhibits growth-factor-mediated activation of MAP kinase.,PTM:Phosphorylated on tyrosine. Phosphorylation of Tyr-228 and Tyr-231 are required for ubiquitination.,PTM:Ubiquitinated; leading to degradation by the proteasome.,similarity:Contains 1 KBD domain.,similarity:Contains 1 SPR (sprouty) domain.,similarity:Contains 1 WH1 domain.,subcellular location:Especially found in the cytoplasm of the stratum spinosum cells called membrane-coated granules.,subunit:Interacts with Ras (By similarity). Homodimer and heterodimer. Able to interact with SPRED1 to form heterodimers.,tissue specificity:Expressed in liver, skin, small intestine, salivary gland and prostate.,		

Validation Data



Western blot analysis of lysates from KB cells, primary antibody was diluted at 1:1000, 4°over night



Immunohistochemical analysis of paraffin-embedded human liver cancer. 1, Antibody was diluted at 1:200(4° overnight). 2, Tris-EDTA,pH9.0 was used for antigen retrieval. 3,Secondary antibody was diluted at 1:200(room temperature, 45min).

## | Contact information

Orders: order.cn@immunoway.com  
Support: support.cn@immunoway.com  
Telephone: 400-8787-807(China)  
Website: <http://www.immunoway.com.cn>  
Address: 2200 Ringwood Ave San Jose, CA 95131 USA



Please scan the QR code  
to access additional  
product information:  
**SPRE2 Rabbit pAb**

---

For Research Use Only. Not for Use in Diagnostic Procedures.

[Antibody](#) | [ELISA Kits](#) | [Protein](#) | [Reagents](#)