

CMPK2 Rabbit pAb

CatalogNo: YT6811

Key Features

Host Species

- Rabbit

Reactivity

- Human, Mouse

Applications

- WB

MW

- 49kD (Calculated)

Isotype

- IgG

Recommended Dilution Ratios

WB 1:500-2000

Storage

Storage* -15°C to -25°C/1 year (Do not lower than -25°C)

Formulation Liquid in PBS containing 50% glycerol, 0.5% BSA and 0.02% sodium azide.

Basic Information

Clonality Polyclonal

Immunogen Information

Immunogen Synthesized peptide derived from human CMPK2 AA range: 57-107

Specificity This antibody detects endogenous levels of CMPK2 at Human/Mouse

Target Information

Gene name CMPK2

Protein Name CMPK2

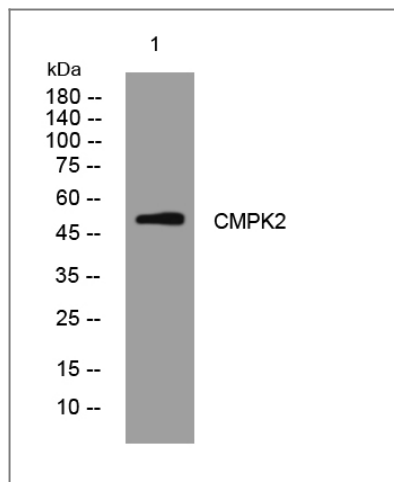
Organism	Gene ID	UniProt ID
Human	129607 ;	Q5EBM0 ;
Mouse	22169 ;	Q3U5Q7 ;

Cellular Localization Mitochondrion .

Tissue specificity Among all investigated tumors, leukemia cells show the most abundant expression.

Function Catalytic activity:ATP + (d)CMP = ADP + (d)CDP.,Function:May participate in dUTP and dCTP synthesis in mitochondria. Is able to phosphorylate dUMP, dCMP, CMP, UMP and monophosphates of the pyrimidine nucleoside analogs ddC, dFdC, araC, BVDU and FdUrd with ATP as phosphate donor. Efficacy is highest for dUMP followed by dCMP; CMP and UMP are poor substrates. May be involved in mtDNA depletion caused by long term treatment with ddC or other pyrimidine analogs.,similarity:Belongs to the thymidylate kinase family.,tissue specificity:Among all investigated tumors, leukemia cells show the most abundant expression.,

Validation Data



Western blot analysis of lysates from DU145 cells, primary antibody was diluted at 1:1000, 4° over night

Contact information

Orders: order.cn@immunoway.com
Support: support.cn@immunoway.com
Telephone: 400-8787-807(China)
Website: <http://www.immunoway.com.cn>
Address: 2200 Ringwood Ave San Jose, CA 95131 USA



Please scan the QR code to access additional product information:
CMPK2 Rabbit pAb

