

## ITIH6 Rabbit pAb

CatalogNo: YT6763

### Key Features

#### Host Species

- Rabbit

#### Reactivity

- Human

#### Applications

- WB,ELISA,IHC

#### MW

- 144kD (Calculated)

#### Isotype

- IgG

### Recommended Dilution Ratios

WB 1:500-2000

IHC 1:50-300

ELISA 1:2000-20000

### Storage

**Storage\*** -15°C to -25°C/1 year(Do not lower than -25°C)

**Formulation** Liquid in PBS containing 50% glycerol, 0.5% BSA and 0.02% sodium azide.

### Basic Information

**Clonality** Polyclonal

### Immunogen Information

**Immunogen** Synthesized peptide derived from human ITIH6 AA range: 152-202

**Specificity** This antibody detects endogenous levels of ITIH6 at Human

### Target Information

**Gene name** ITIH6 ITIH5L UNQ6369/PRO21074

**Protein Name** ITIH6

**Organism**

**Gene ID**

**UniProt ID**

Human

[347365;](#)

[Q6UXX5;](#)

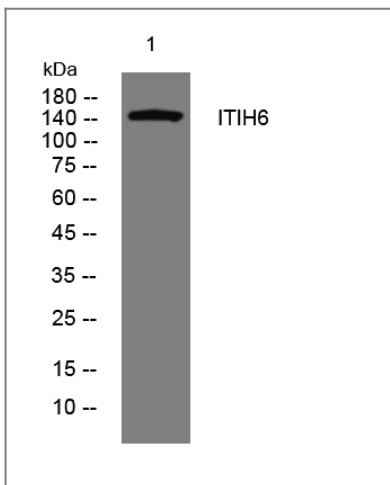
**Cellular  
Localization**

Secreted .

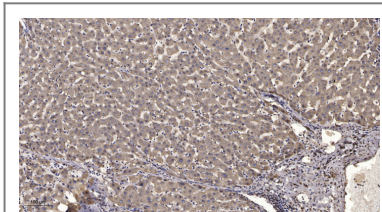
**Function**

similarity:Belongs to the ITIH family.,similarity:Contains 1 VWFA domain.,

## Validation Data



Western blot analysis of lysates from U2OS cells, primary antibody was diluted at 1:1000, 4° over night



Immunohistochemical analysis of paraffin-embedded human liver cancer. 1, Antibody was diluted at 1:200(4° overnight). 2, Tris-EDTA,pH9.0 was used for antigen retrieval. 3,Secondary antibody was diluted at 1:200(room temperature, 45min).

## Contact information

Orders: order.cn@immunoway.com  
Support: support.cn@immunoway.com  
Telephone: 400-8787-807(China)  
Website: <http://www.immunoway.com.cn>  
Address: 2200 Ringwood Ave San Jose, CA 95131 USA



Please scan the QR code to access additional product information:  
**ITIH6 Rabbit pAb**