

RT4I1 Rabbit pAb

CatalogNo: YT6750

Key Features

Host Species

- Rabbit

Reactivity

- Human, Mouse

Applications

- WB

MW

- 44kD (Calculated)

Isotype

- IgG

Recommended Dilution Ratios

WB 1:500-2000

Storage

Storage* -15°C to -25°C/1 year (Do not lower than -25°C)

Formulation Liquid in PBS containing 50% glycerol, 0.5% BSA and 0.02% sodium azide.

Basic Information

Clonality Polyclonal

Immunogen Information

Immunogen Synthesized peptide derived from human RT4I1 AA range: 282-332

Specificity This antibody detects endogenous levels of RT4I1 at Human/Mouse

Target Information

Gene name RTN4IP1 NIMP

Protein Name RT4I1

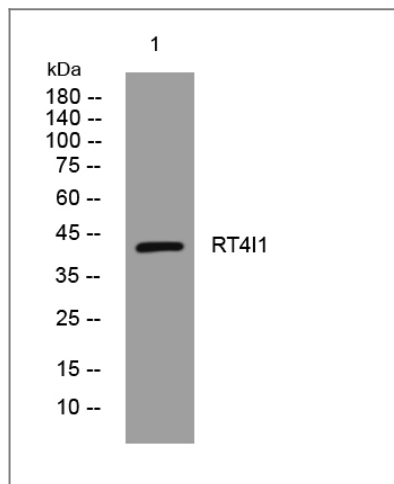
Organism	Gene ID	UniProt ID
Human	84816 ;	Q8WWV3 ;
Mouse	170728 ;	Q924D0 ;

Cellular Localization Mitochondrion outer membrane . Colocalizes with the endoplasmic reticulum HSPA5 at spots corresponding to contacts with mitochondria. .

Tissue specificity Widely expressed in mitochondria-enriched tissues. Found in heart, muscle, kidney, liver, brain and placenta.

Function Function:Appears to be a potent inhibitor of regeneration following spinal cord injury.,similarity:Belongs to the zinc-containing alcohol dehydrogenase family. Quinone oxidoreductase subfamily.,subunit:Interacts with RTN4, UQCRC1 and UQCRC2.,tissue specificity:Widely expressed in mitochondria-enriched tissues. Found in heart, muscle, kidney, liver, brain and placenta.,

Validation Data



Western blot analysis of lysates from HpeG2 cells, primary antibody was diluted at 1:1000, 4° over night

Contact information

Orders: order.cn@immunoway.com
Support: support.cn@immunoway.com
Telephone: 400-8787-807(China)
Website: <http://www.immunoway.com.cn>
Address: 2200 Ringwood Ave San Jose, CA 95131 USA



Please scan the QR code to access additional product information:
RT4I1 Rabbit pAb

