

## ZBT25 Rabbit pAb

CatalogNo: YT6741

### | Key Features

#### Host Species

- Rabbit

#### Reactivity

- Human

#### Applications

- WB

#### MW

- 48kD (Calculated)

#### Isotype

- IgG

### | Recommended Dilution Ratios

WB 1:500-2000

### | Storage

**Storage\*** -15°C to -25°C/1 year(Do not lower than -25°C)

**Formulation** Liquid in PBS containing 50% glycerol, 0.5% BSA and 0.02% sodium azide.

### | Basic Information

**Clonality** Polyclonal

### | Immunogen Information

**Immunogen** Synthesized peptide derived from human ZBT25 AA range: 249-299

**Specificity** This antibody detects endogenous levels of ZBT25 at Human

### | Target Information

**Gene name** ZBTB25 C14orf51 KUP ZNF46

**Protein Name** ZBT25

**Organism**

**Gene ID**

**UniProt ID**

Human

[7597](#);

[P24278](#);

**Cellular  
Localization**

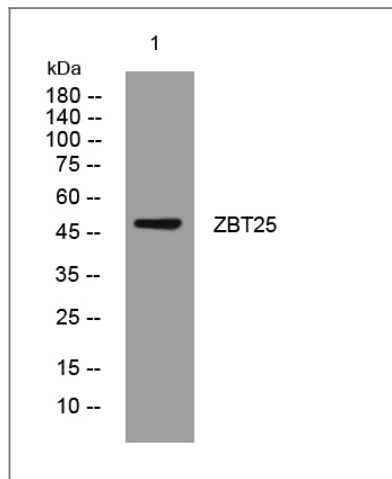
Nucleus.

**Tissue specificity** Expressed mainly in hematopoietic cells and testis.

**Function**

Function:May be involved in transcriptional regulation.,similarity:Contains 1 BTB (POZ) domain.,similarity:Contains 2 C2H2-type zinc fingers.,tissue specificity:Expressed mainly in hematopoietic cells and testis.,

## Validation Data



Western blot analysis of lysates from U2OS cells, primary antibody was diluted at 1:1000, 4°over night

## Contact information

Orders: order.cn@immunoway.com  
Support: support.cn@immunoway.com  
Telephone: 400-8787-807(China)  
Website: <http://www.immunoway.com.cn>  
Address: 2200 Ringwood Ave San Jose, CA 95131 USA



Please scan the QR code to access additional product information:  
**ZBT25 Rabbit pAb**

For Research Use Only. Not for Use in Diagnostic Procedures.

[Antibody](#) | [ELISA Kits](#) | [Protein](#) | [Reagents](#)