

GALE Rabbit pAb

CatalogNo: YT6716

Key Features

Host Species

- Rabbit

Reactivity

- Human, Mouse, Rat

Applications

- WB

MW

- 38kD (Calculated)

Isotype

- IgG

Recommended Dilution Ratios

WB 1:500-2000

Storage

Storage* -15°C to -25°C/1 year (Do not lower than -25°C)

Formulation Liquid in PBS containing 50% glycerol, 0.5% BSA and 0.02% sodium azide.

Basic Information

Clonality Polyclonal

Immunogen Information

Immunogen Synthesized peptide derived from human GALE AA range: 104-154

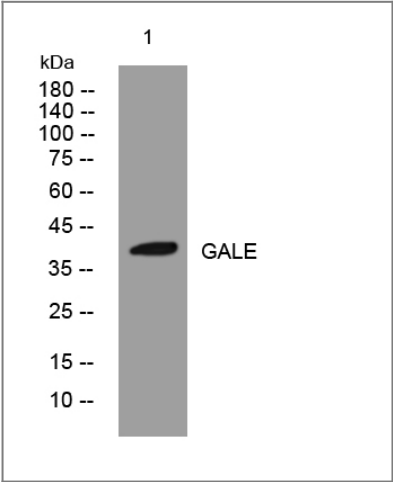
Specificity This antibody detects endogenous levels of GALE at Human/Mouse/Rat

Target Information

Gene name GALE

Protein Name	GALE		
	Organism	Gene ID	UniProt ID
	Human	2582;	Q14376;
	Mouse	74246;	Q8R059;
	Rat		P18645;
Cellular Localization	cytosol,extracellular exosome,		
Function	<p>Catalytic activity:UDP-glucose = UDP-galactose.,cofactor:NAD.,Disease:Defects in GALE are the cause of epimerase-deficiency galactosemia (EDG) [MIM:230350]; also known as galactosemia type 3. Clinical features include early-onset cataracts, liver damage, deafness and mental retardation. There are two clinically distinct forms of EDG. (1) A benign, or 'peripheral' form with no detectable GALE activity in red blood cells and characterized by mild symptoms. Some patients may suffer no symptoms beyond raised levels of galactose-1-phosphate in the blood. (2) A much rarer 'generalized' form with undetectable levels of GALE activity in all tissues and resulting in severe features such as restricted growth and mental development.,Function:Catalyzes two distinct but analogous reactions: the epimerization of UDP-glucose to UDP-galactose and the epimerization of UDP-N-acetylglucosamine to UDP-N-acetylgalactosamine.,pathway:Carbohydrate metabolism; galactose metabolism.,similarity:Belongs to the sugar epimerase family.,subunit:Homodimer.,</p>		

Validation Data



Western blot analysis of lysates from PC-12 cells, primary antibody was diluted at 1:1000, 4°over night

Contact information

Orders: order.cn@immunoway.com
Support: support.cn@immunoway.com
Telephone: 400-8787-807(China)
Website: <http://www.immunoway.com.cn>
Address: 2200 Ringwood Ave San Jose, CA 95131 USA



Please scan the QR code
to access additional
product information:
GALE Rabbit pAb

For Research Use Only. Not for Use in Diagnostic Procedures.

[Antibody](#) | [ELISA Kits](#) | [Protein](#) | [Reagents](#)