

## RCBT2 Rabbit pAb

CatalogNo: YT6715

### Key Features

**Host Species**

- Rabbit

**Reactivity**

- Human, Mouse, Rat

**Applications**

- WB, ELISA, IHC

**MW**

- 61kD (Calculated)

**Isotype**

- IgG

### Recommended Dilution Ratios

**WB 1:500-2000****IHC 1:50-300****ELISA 1:2000-20000**

### Storage

**Storage\***

-15°C to -25°C/1 year (Do not lower than -25°C)

**Formulation**

Liquid in PBS containing 50% glycerol, 0.5% BSA and 0.02% sodium azide.

### Basic Information

**Clonality**

Polyclonal

### Immunogen Information

**Immunogen**

Synthesized peptide derived from human RCBT2 AA range: 53-103

**Specificity**

This antibody detects endogenous levels of RCBT2 at Human/Mouse/Rat

### Target Information

**Gene name**

RCBTB2 CHC1L RLG

**Protein Name** RCBT2

Organism	Gene ID	UniProt ID
Human	<a href="#">1102;</a>	<a href="#">O95199;</a>
Mouse	<a href="#">105670;</a>	<a href="#">Q99LJ7;</a>
Rat	<a href="#">290363;</a>	<a href="#">Q6P798;</a>

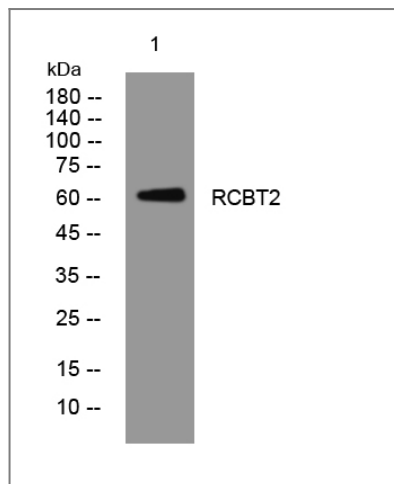
**Cellular  
Localization**

Cytoplasmic vesicle, secretory vesicle, acrosome . Mainly found in the acrosomal cap region. .

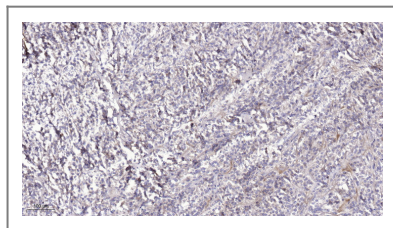
**Function**

similarity:Contains 1 BTB (POZ) domain.,similarity:Contains 2 BTB (POZ) domains.,similarity:Contains 6 RCC1 repeats.,

## | Validation Data



Western blot analysis of lysates from A431 cells, primary antibody was diluted at 1:1000, 4° over night



Immunohistochemical analysis of paraffin-embedded human Colon cancer. 1, Antibody was diluted at 1:200(4° overnight). 2, Tris-EDTA,pH9.0 was used for antigen retrieval. 3,Secondary antibody was diluted at 1:200(room temperature, 45min).

## | Contact information

Orders: order.cn@immunoway.com  
Support: support.cn@immunoway.com  
Telephone: 400-8787-807(China)  
Website: <http://www.immunoway.com.cn>  
Address: 2200 Ringwood Ave San Jose, CA 95131 USA



Please scan the QR code to access additional product information:  
**RCBT2 Rabbit pAb**

